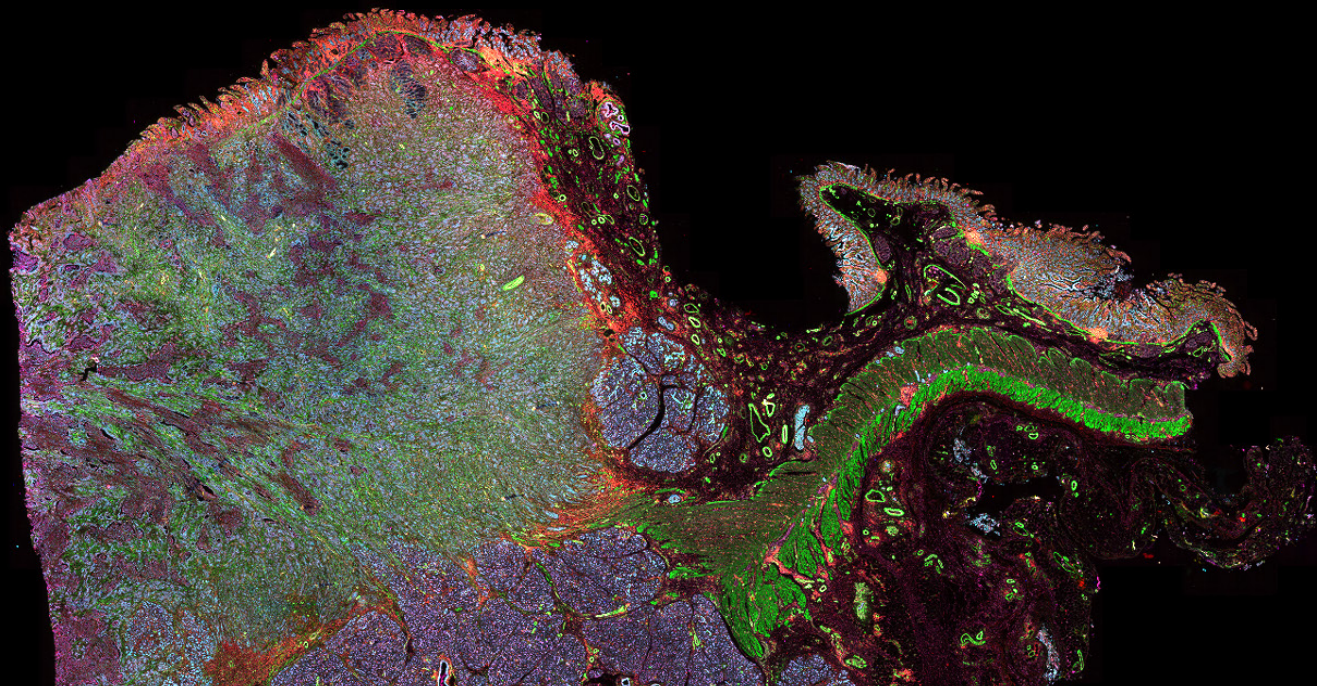


From Eye to Insight

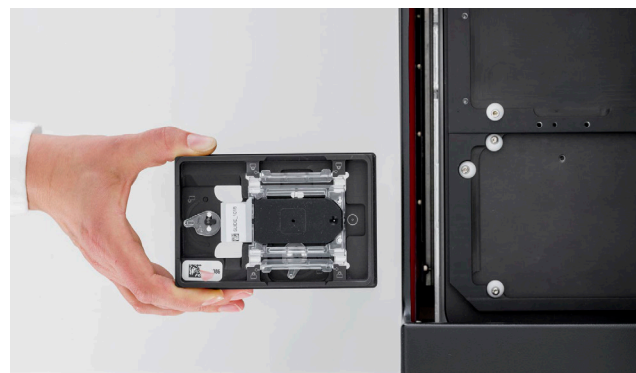


Crystal-clear multiplexed tissue imaging of 60+ biomarkers

CELL DIVE AND CLICKWELL THE MULTIPLEXING SYSTEM OF CHOICE

With the Cell DIVE™ Multiplexed Imaging solution and ClickWell coverslip-free slide holder, you have the power to choose exactly how to design and execute your multiplexing experiments.

- > Enjoy the freedom to use the proven Cell DIVE iterative staining approach alongside third-party multiplexing kits or immunofluorescence kits
- > Adapt your workflow as your research evolves with ClickWell – compatible with both manual and automated staining techniques
- > Protect your tissue through many rounds of staining and imaging with a coverslip-free workflow, to image as many biomarkers as your research question requires



CELL DIVE MULTIPLEXED IMAGING SOLUTION

Designed to deliver precise and robust results, the Cell DIVE multiplexed imaging solution is a proven system for imaging 60+ biomarkers from one tissue sample at the single-cell level. The solution consists of a fully customizable assay design with tissue preserving staining protocol and a precision-engineered imager with intuitive, scalable acquisition and analysis software.

INSIGHTS YOU CAN TRUST

Developed over ten years and validated by collaborators globally, the Cell DIVE imaging solution gives you high-quality results you can rely on. Start your research with confidence using Cell DIVE's 350+ validated antibodies. Create a custom panel from antibodies on the list or use a detailed protocol to characterize your own antibodies.

REMARKABLE LEICA QUALITY IMAGES

Exceptional whole tissue images give you confidence in single-cell spatial proteomics. Cell DIVE's automatic image calibration and correction saves time and produces precise in-depth imaging. Calibrations are automatically applied to images downstream so that you can focus on breakthroughs, not manual adjustments.

EASY WORKFLOWS

Comprehensive protocols contain all details of a multiplexed study to guide the user through the workflow. Used in conjunction with the integrated barcode reader, keep track of multiple samples and studies effortlessly.



ClickWell enables a completely coverslip-free workflow

CONNECT
WITH US!



Leica Microsystems CMS GmbH | Ernst-Leitz-Strasse 17–37 | D-35578 Wetzlar (Germany)

Tel. +49 (0) 6441 29-0 | F +49 (0) 6441 29-2599

www.leica-microsystems.com