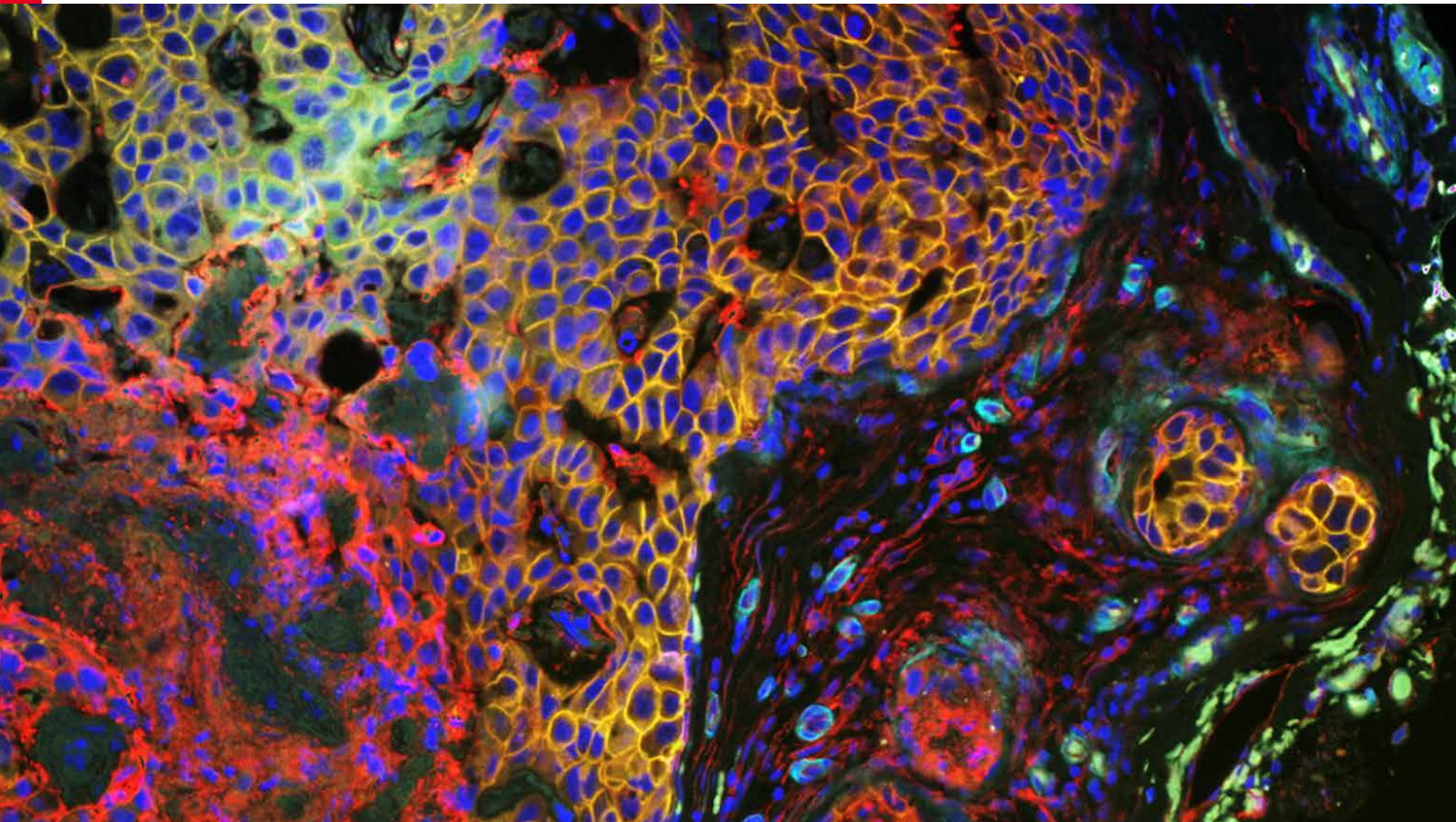


From Eye to Insight



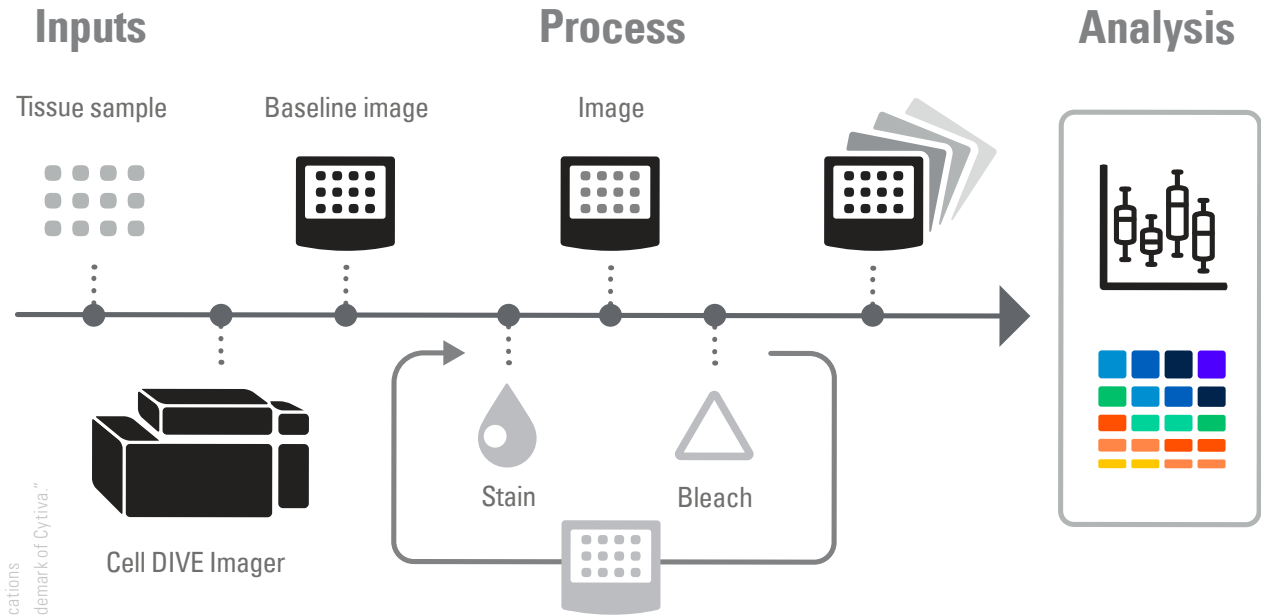
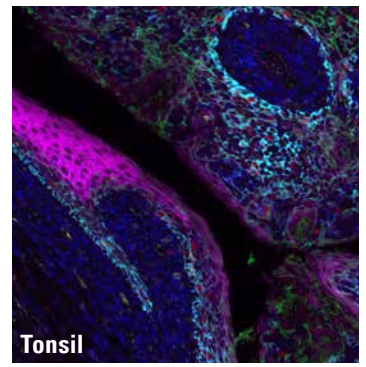
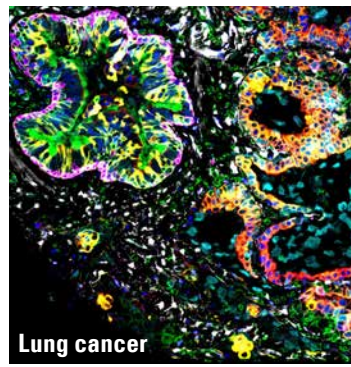
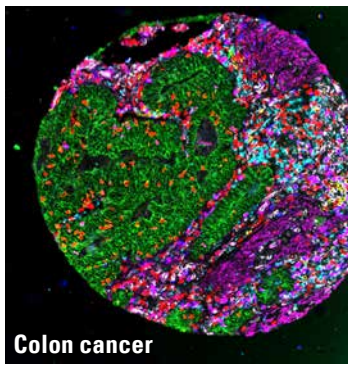
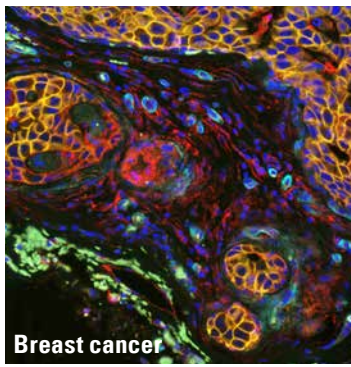
CELL DIVE™ MULTIPLEXED IMAGING

An antibody-based hyperplexed technique
addressing spatial cell biology and function

Thousands of spatial cellular
data points from a single
tissue image

Explore how Cell DIVE multiplexed imaging can uncover unique cell phenotypes and their distribution within the tissue microenvironment.

With Cell DIVE multiplexed imaging, iteratively probe, image and de-stain to capture thousands of spatial cellular data points from a single tissue image.



High-quality, speedy imaging

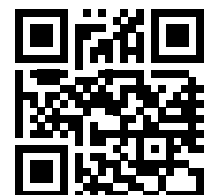
Flexible, reliable, patented, hyperplexing protocol

Results you can trust with Cell DIVE multiplexed imaging

- > Reveals more biomarkers-up to 60 in one sample
- > More validated, commercially-available antibodies-over 400 have been characterized
- > High-quality image data-extremely accurate registration and stitching technology
- > Developed by scientists for scientists-over the last ten years

MC-0002307_03/2021 Copyright © by Leica Microsystems CMS GmbH, Wetzlar, Germany, 2021 - Subject to modifications
 LEICA and the Leica Logo are registered trademarks of Leica Microsystems IR GmbH. "Cell DIVE is a registered trademark of Cytiva."

CONNECT WITH US!



Leica Microsystems CMS GmbH | Ernst-Leitz-Strasse 17-37 | D-35578 Wetzlar (Germany)

Tel. +49 (0) 6441 29-0 | F +49 (0) 6441 29-2599

www.leica-microsystems.com