

From Eye to Insight



TWAIN v2.1 driver

Installation guide and release notes

Release documentation for TWAIN driver

This document describes the release of the TWAIN driver for a limited number of LMS devices. You should read this document before installing your copy of this driver.

All reasonable steps have been taken to ensure that this publication is correct and complete, but should any user be in doubt about any detail, clarification may be sought from Leica Microsystems CMS GmbH, or their accredited representative. The information in this document is subject to change without notice and should not be construed, as a commitment by Leica Microsystems CMS GmbH. Leica Microsystems CMS GmbH accepts no responsibility for any errors that may appear in this document.

Copyright © 2024 Leica Microsystems CMS GmbH

All rights reserved. The contents of this publication may not be reproduced in any form or communicated to a third party without prior written permission of Leica Microsystems CMS GmbH. Due to a policy of continuous development, we reserve the right to change specifications without notice. Microsoft and MS-DOS are registered trademarks and Windows, the Windows logo, the Windows 2000 logo, the Windows XP logo, the Windows Vista logo, the Windows 7 logo and the Windows 10 logo are trademarks of Microsoft Corporation.

Date: February 28th, 2024

Contents

1. Compatible Devices.....	4
1.1 Compatible Cameras / Microscopes.....	4
2. Technical Requirements and Installation	4
2.1 System Requirements.....	4
2.2. Download.....	4
2.3 Installation.....	5
2.4 Use of the driver.....	8
3. Known issues	10

1. Compatible Devices

1.1 Compatible Cameras / Microscopes

Flexacam c5
Flexacam i5 (Compound)
Flexacam i5 (Stereo)
Ivesta 3 (Integrated Camera)
ICC50 W
K3C
K5C
FLEXACAM C1
Flexacam C3
S9i

2. Technical Requirements and Installation

2.1 System Requirements

The TWAIN driver for the Leica Microsystems Camera supports the operating system Windows 10. It supports 32-bit and 64-bit TWAIN applications. TWAIN driver currently does not work with Gimp (GNU Image Manipulation Program).

2.2. Download

The TWAIN driver can be downloaded from the following website: [TWAIN registration | Leica Microsystems \(leica-microsystems.com\)](#)

The release notes can be downloaded from Download sections of the above-mentioned devices webpages:

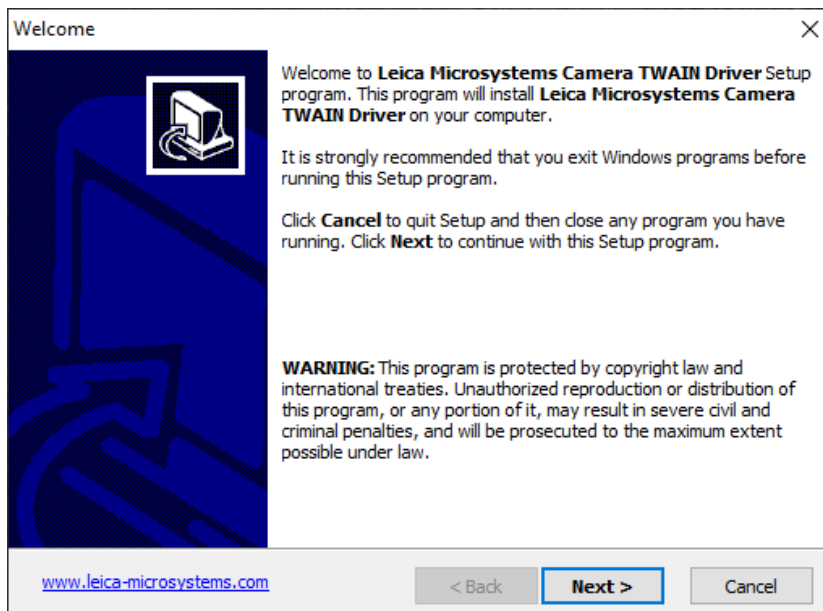
- Flexacam c5 and i5 cameras: [Flexacam c5 & i5 - Downloads | Products | Leica Microsystems \(leica-microsystems.com\)](#)
- Ivesta 3 (Integrated Camera): [Ivesta 3 - Downloads | Products | Leica Microsystems \(leica-microsystems.com\)](#)
- ICC50W: [Leica ICC50 W & ICC50 E - Downloads | Products | Leica Microsystems \(leica-microsystems.com\)](#)

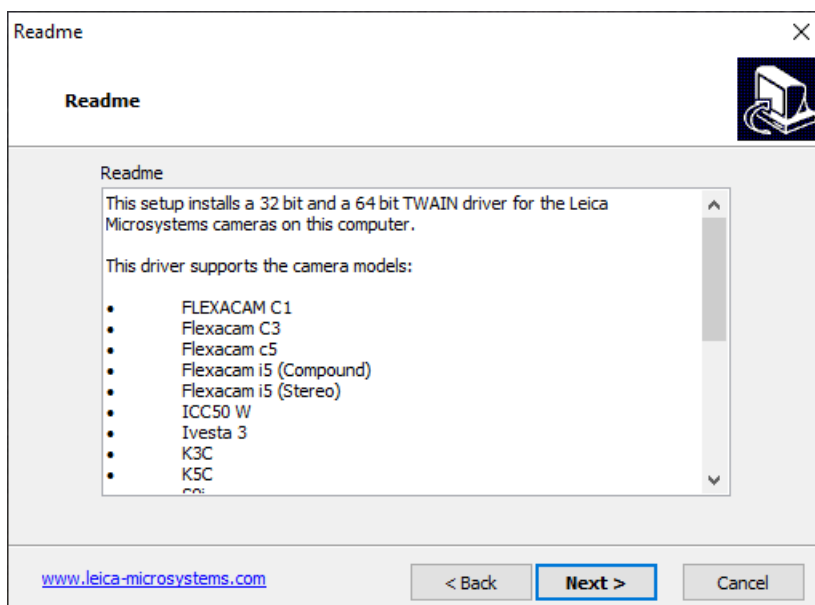
- K3C: [*K3C & K3M - Downloads | Products | Leica Microsystems \(leica-microsystems.com\)*](#)
- Flexacam C1, C3: [*Flexacam C3 - Downloads | Products | Leica Microsystems \(leica-microsystems.com\)*](#)
- S9i: [*S9 Series - Downloads | Products | Leica Microsystems \(leica-microsystems.com\)*](#)

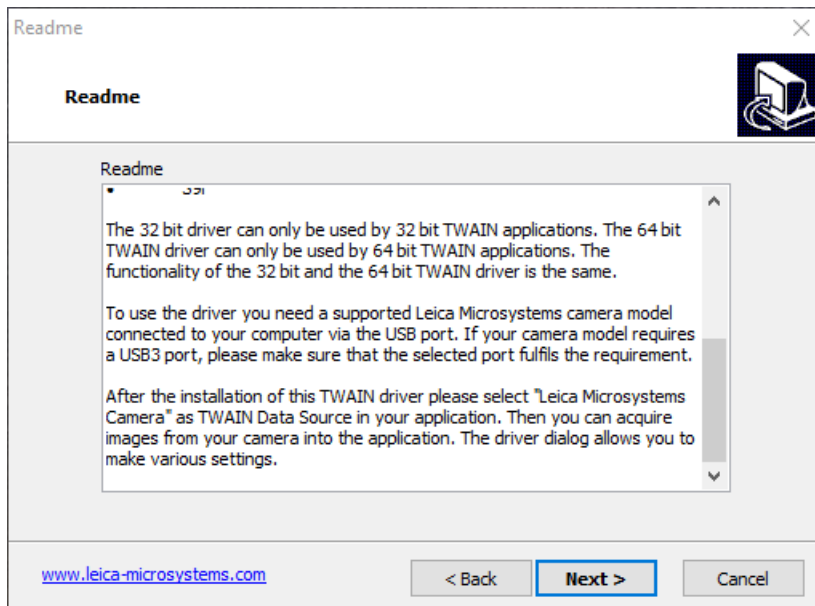
Please store the setup program on a local storage and start the installation from there.

2.3 Installation

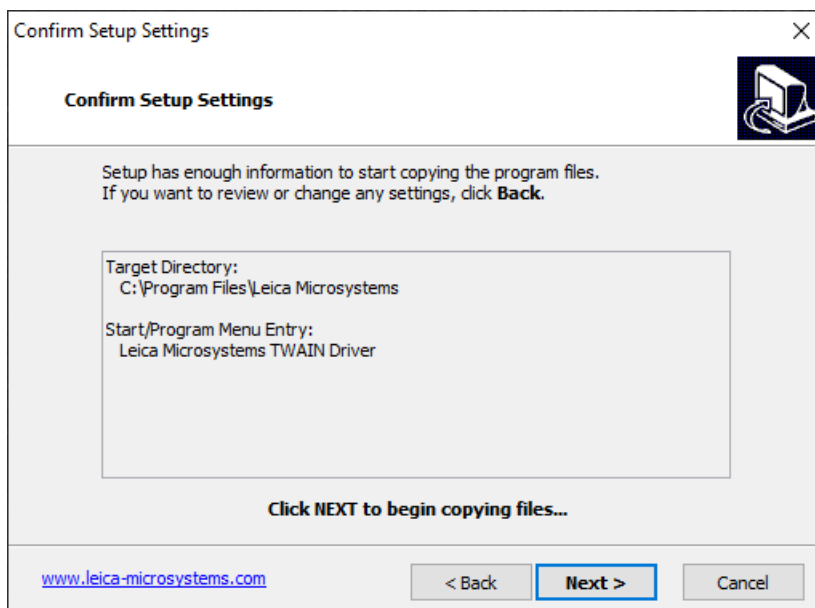
To install the TWAIN driver, start the program Setup_Leica_Twain.exe and follow the instructions of the setup program. The setup program support multiple dialog languages. Depending on your system setting admin rights may be required.

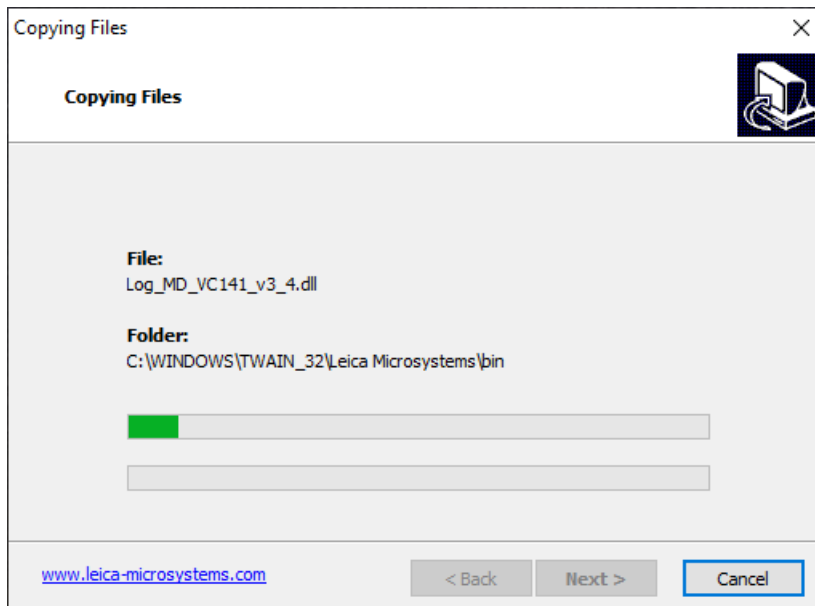




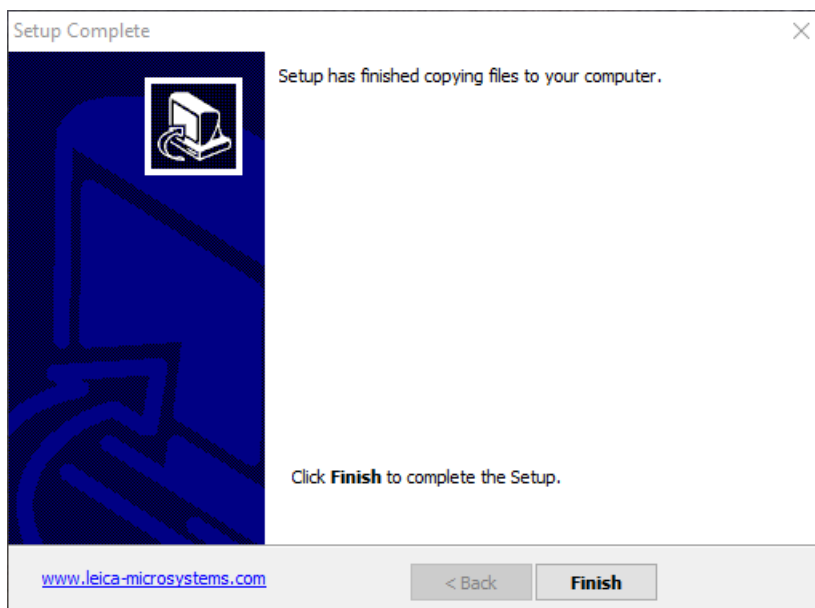


In the following dialog the target directories are displayed, and the copy process is started.





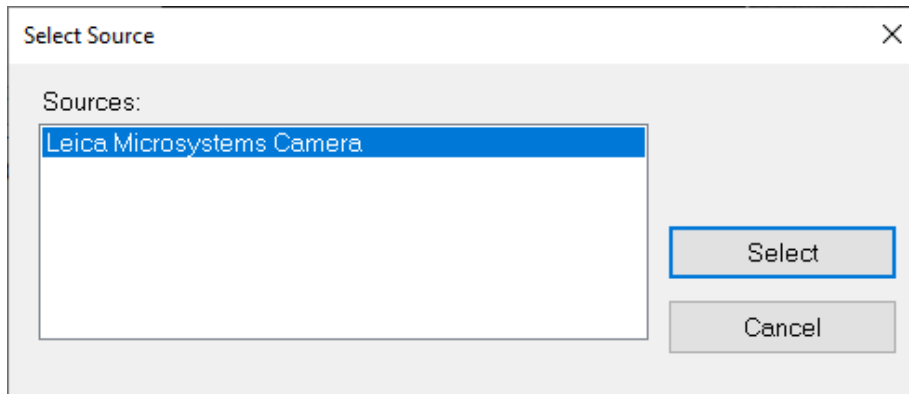
After pressing the Next button, the files will be copied, and the progress will be shown.



After the copying process is completed, the setup program's process is finished by pressing the Finish key.

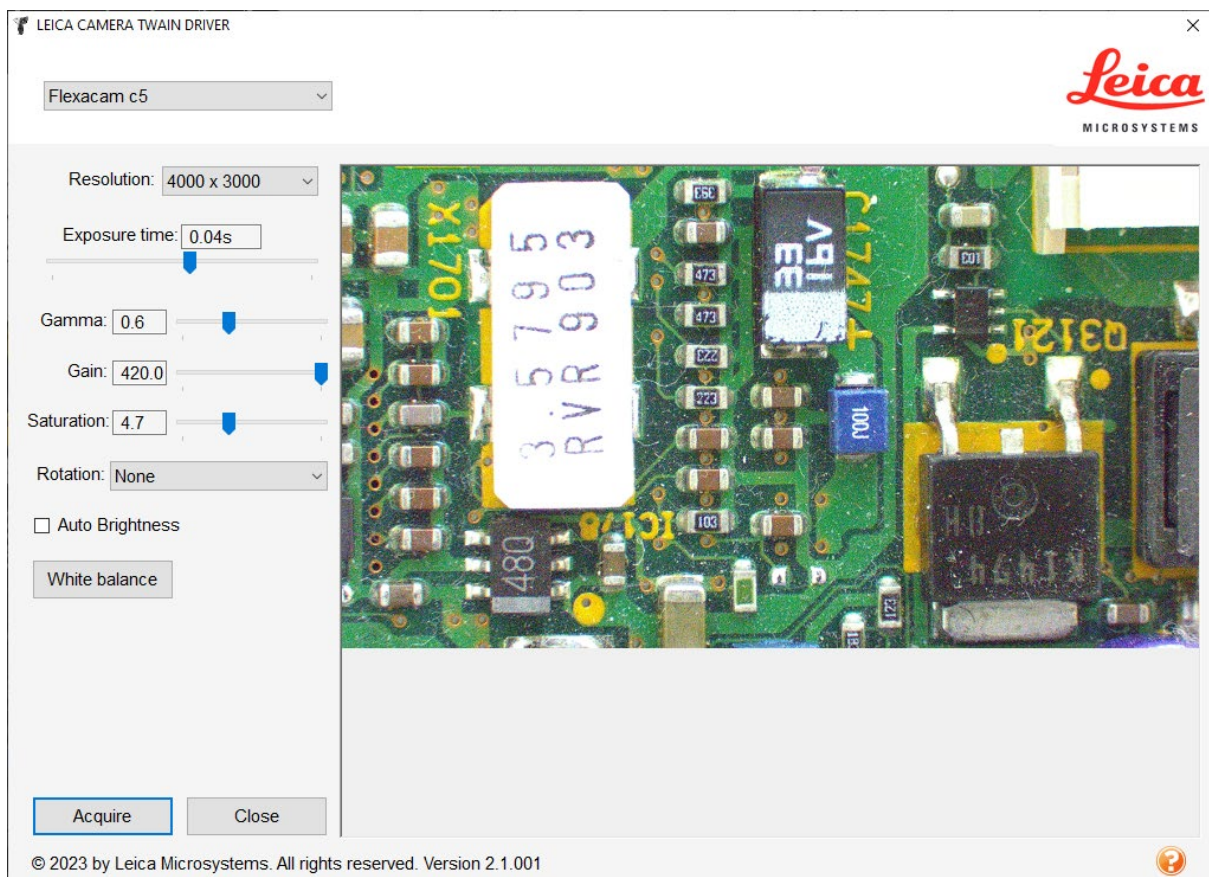
2.4 Use of the driver

The driver can be used with any TWAIN compliant application. In such a TWAIN program like e.g. IrfanView, "Leica Microsystems Camera 2.1" for x86-bit operating systems or "Leica Microsystems Camera" for x64-bit operating systems must be selected as image data source.



After that, the scanning process can be started by pressing the Acquire button. The dialog of the TWAIN driver opens then it searches for connected camera. This can take up to 20 seconds.

From available cameras a model can be selected if the top left drop-down box of the dialog. If no camera has been found an error message will be shown.



In the left area of the TWAIN driver windows are the controls for the image's settings. They have direct impact on the preview and the images which will be captured on the right side from the acquisition menu.

By clicking the “Acquire” button, an image will be captured and transferred to the TWAIN application. By clicking the “Close” button, the driver will be closed without taking an image.

The question mark in the bottom right corner of the menu will bring up a brief Help index with short descriptions of each of the acquisition settings.

3. Known issues

- In “Photo Pad” application, when closing the window with a driver, the software freezes.
- We are facing issues with the Software “NAPS2”

How to handle:

- Killing the software with the task manager is sufficient, application can be restarted and used again.
- Choose another viewer, e.g. IrfanView, where this failure not occurs.
- Leica K3Cs are not able to use Auto Brightness in x64-bit applications.

How to handle:

- Use a x86-bit application – Auto Brightness is working there.