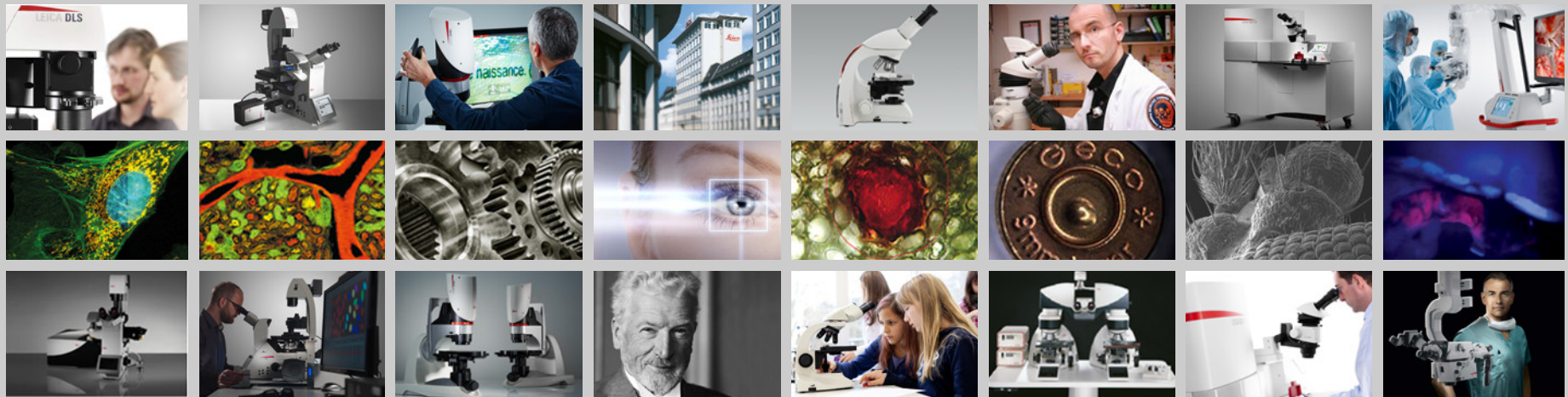


## From Eye to Insight

**Leica**  
MICROSYSTEMS



# Leica AirLab Icon Guide

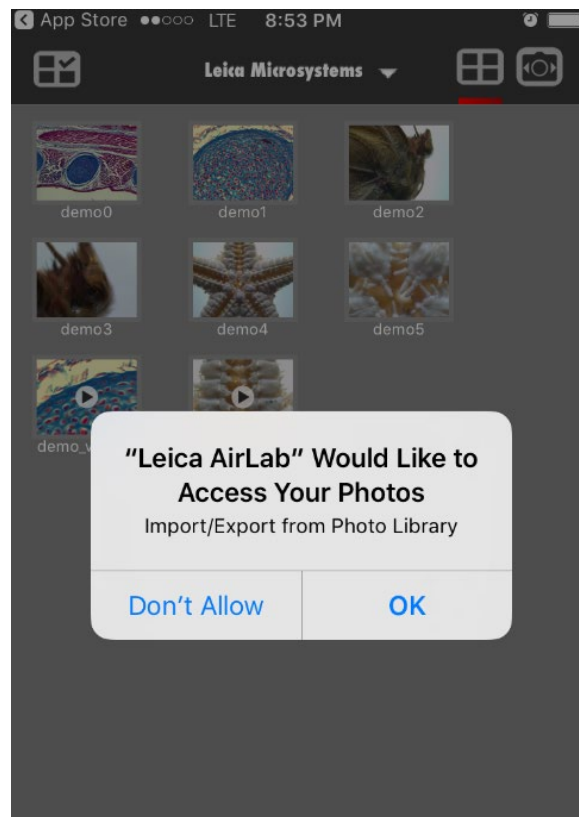
# Leica AirLab

- Download the Leica Airlab App from the Apple App store for iOS devices or from Google Play for Android devices. See note on next page before downloading!!



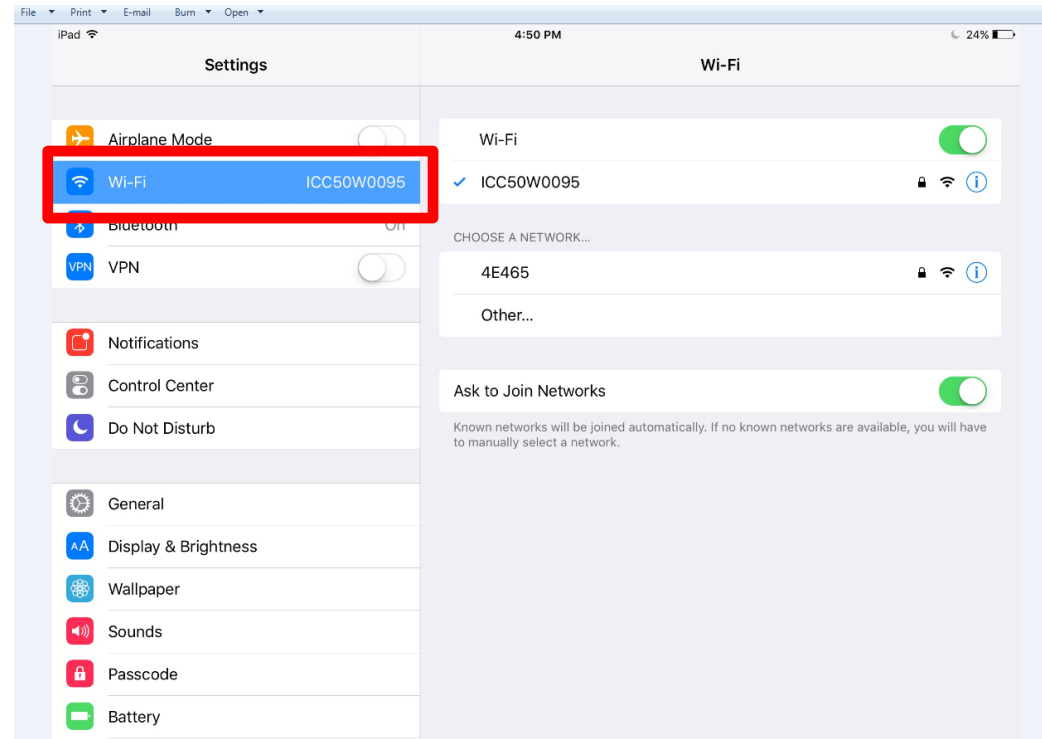
# Leica AirLab

- If during the App download you get the below message regarding Leica AirLab accessing your Photos, please select OK. This allows you to share your AirLab images directly into your photo library.



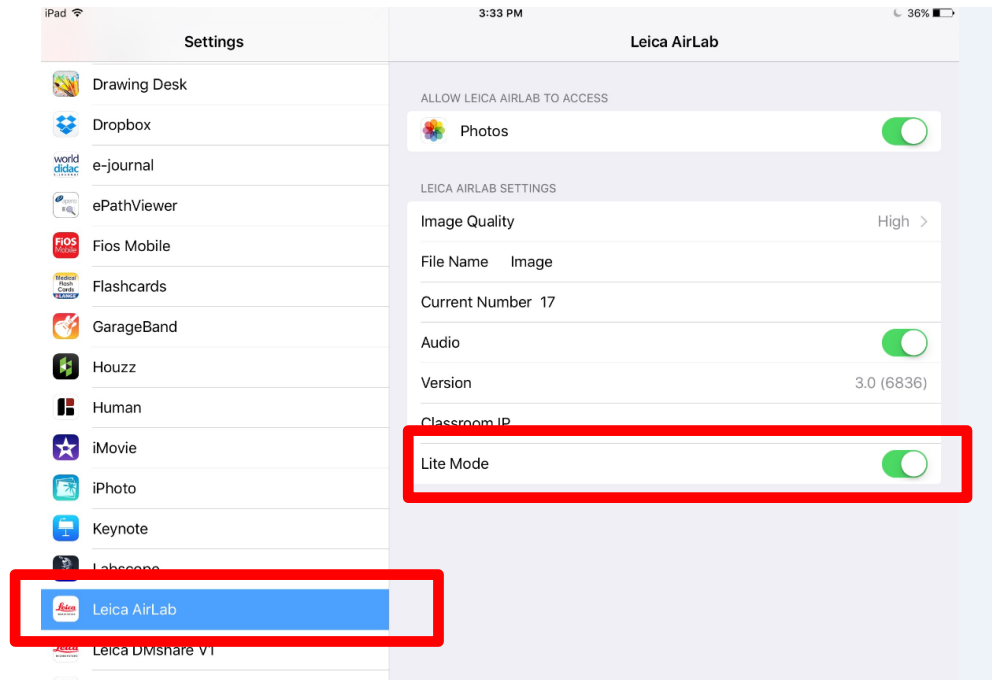
# Leica AirLab

- Select your camera WiFi network in your device settings



# Leica AirLab

- Find AirLab in your App List of your device Settings and toggle on or off „Lite“ mode for allowing camera control or not



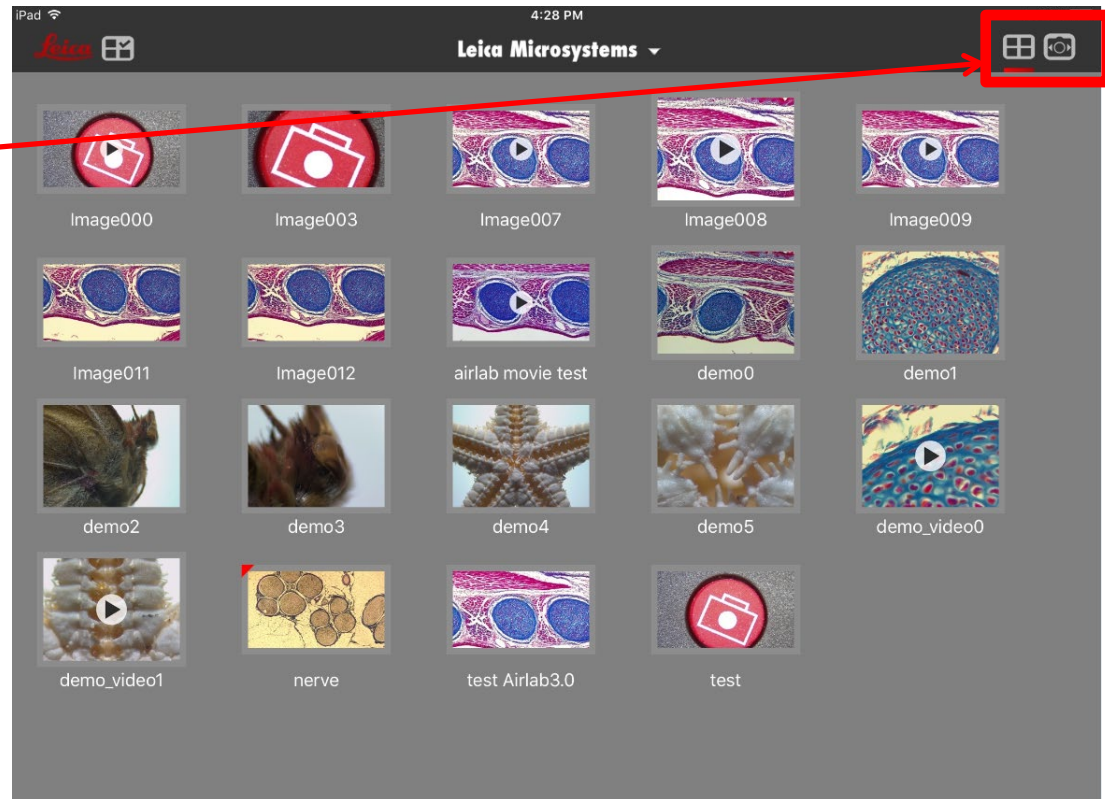
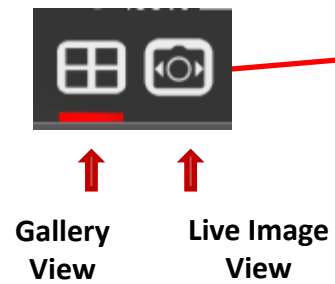
# Leica AirLab

- Open the Leica AirLab App



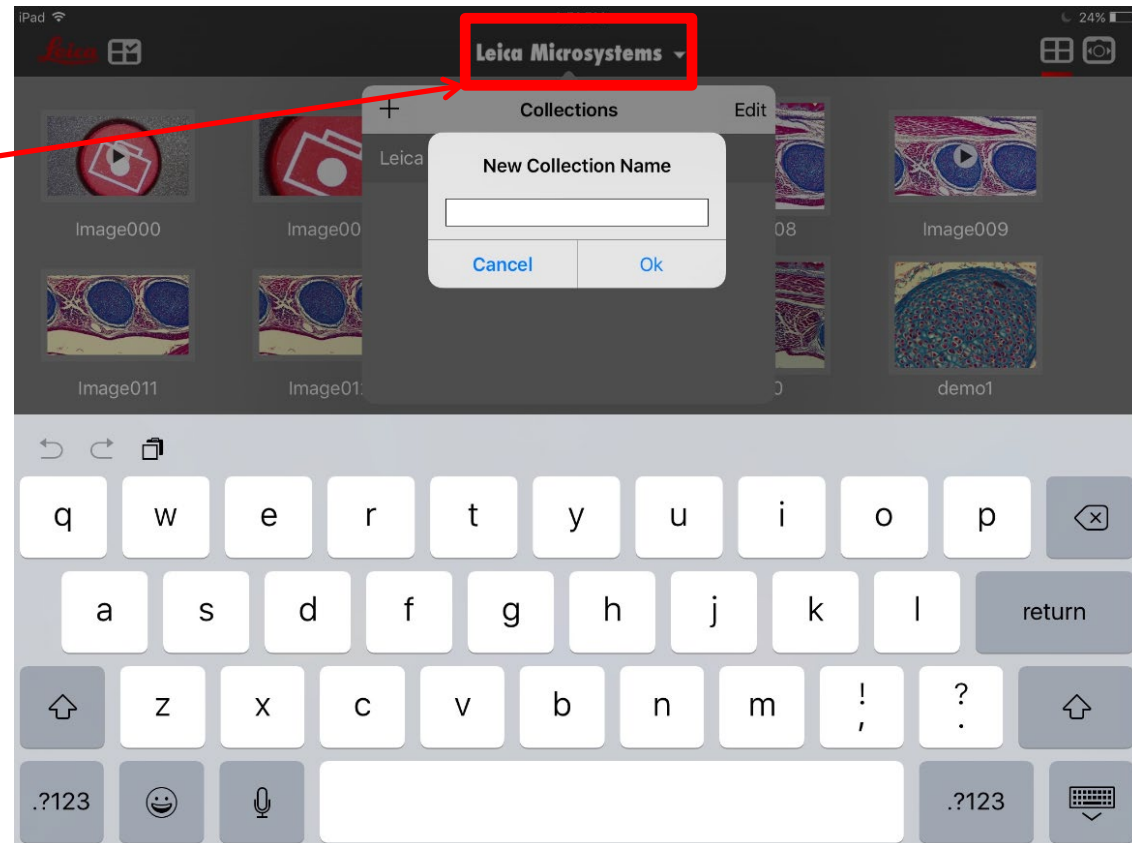
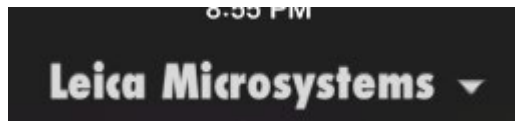
# Leica AirLab

- AirLab opens in Gallery View



# Collections

- Select/Create a Collection





# Select Live Image View



Add a camera by IP address/URL



Select Camera list view

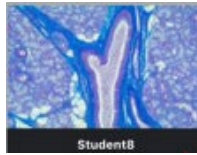


Live Image View

## Select Live Image View

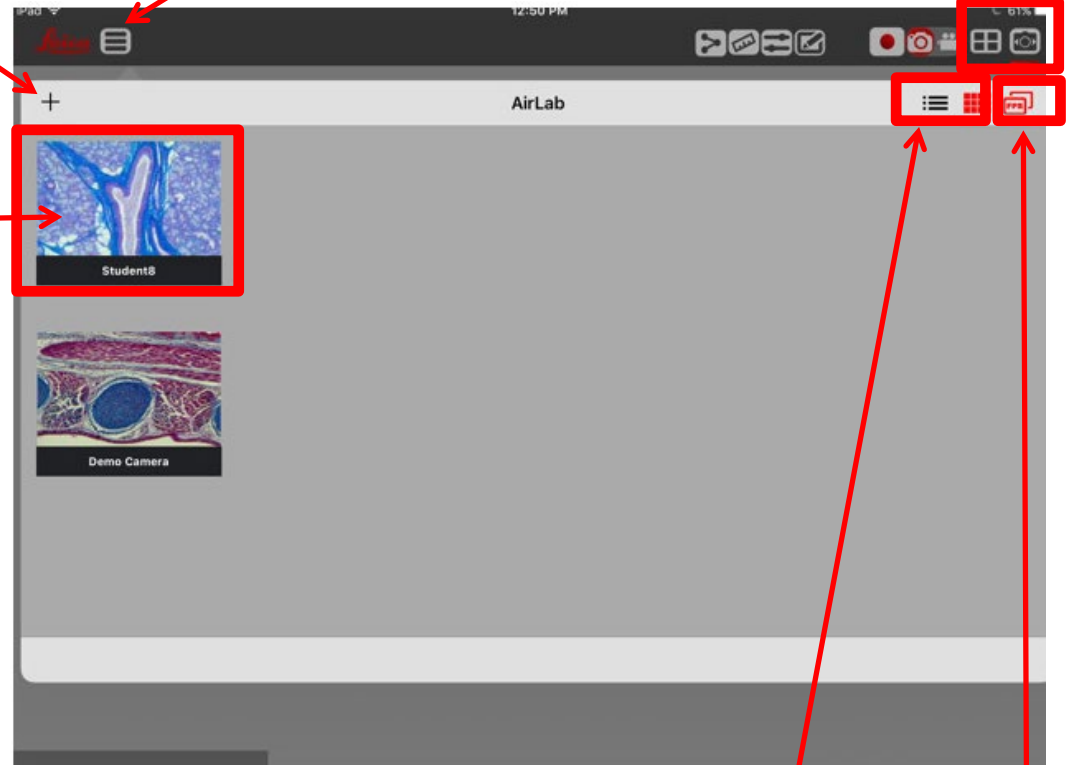
Tap an image to select it for full screen view.

Note that the thumbnails first appear as a Leica logo, then after a few seconds, the microscope image appears.



The thumbnails are updated approximately every 5 seconds.

If you are connecting to a network and subnet where several camras are connected, you will see thumbnails of all cameras connected to the network



Select thumbnail view or list view



Toggle on/off view of frame rate and live resolution

# Calibrate

- To calibrate the system select the calibration icon from the live image view
- A pop up shows default magnifications
- Tap the magnification you are using
- Tap „Set“
- The Live image is now Calibrated for the magnification you selected
- To Add a magnification, tap „Add: and another line will be added to the list
- To modify the Magnification, tap „Modify“

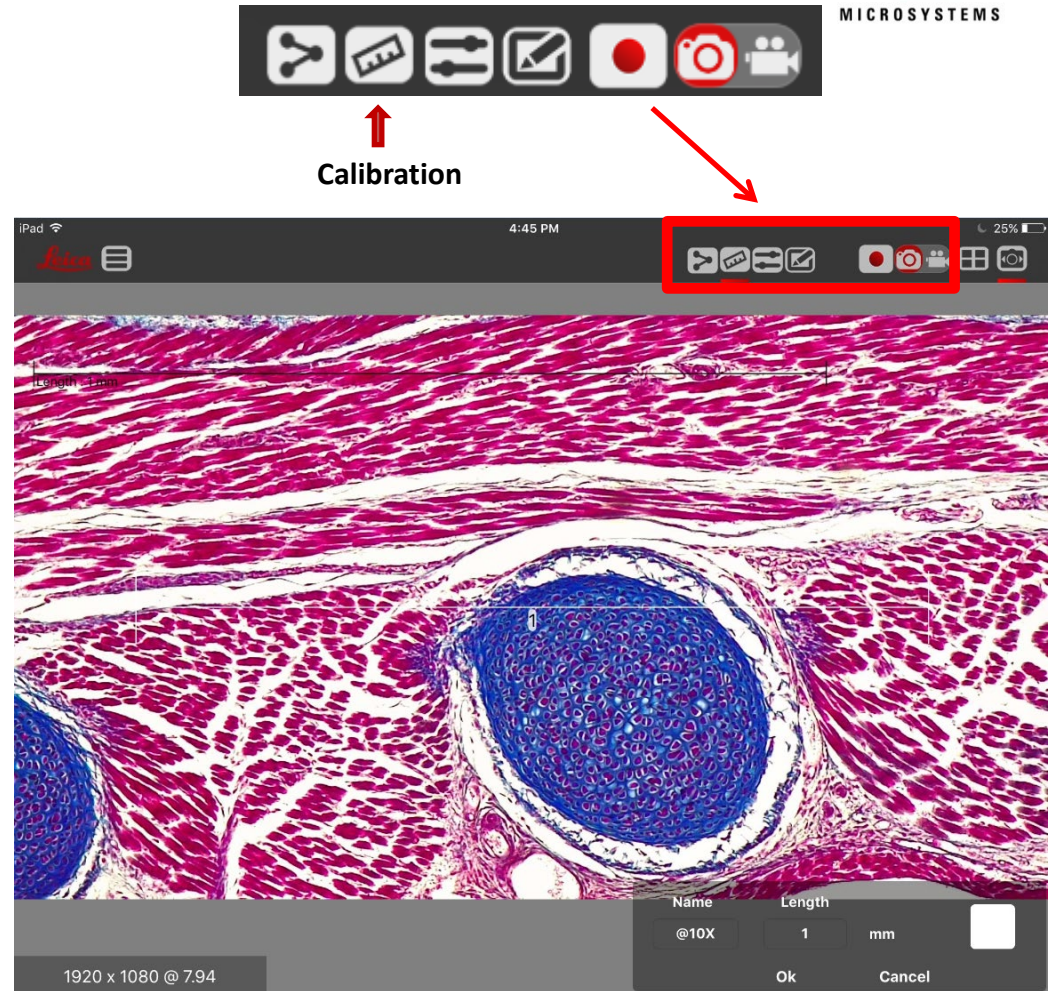


Calibration



# Calibrate

- When you tap „Modify“ a line appears on the screen along with a pop up on the lower right
- Place an object of known dimension (ie: micrometer) under the microscope and stretch the line to the known dimension
- Tap on the pop up details to change the name, dimension, units of measure, and color
- Tap „OK“





# Camera Settings

- Select the camera settings icon for control of the acquisition parameters



↑  
Camera Settings



# Camera Settings

## ■ Camera Setting elements



Rotate /Flip the image

Auto exposure/Brightness  
Manual exposure/Exposure time, Gain

Gamma, saturation, sharpening, auto white balance, region white balance, Live resolution

Return to original settings



Note when changing Live resolutions, the capture resolution will change to offer choices in the same aspect ratio

Capture Formats	Live Formats
Live	0.5MP ( 4:3)
720p (16:9)	0.8MP ( 4:3)
2.0MP ( 4:3)	720p (16:9)
2.5MP ( 4:3)	2.0MP ( 4:3)
1080p (16:9)	1080p (16:9)
5.0MP ( 4:3)	



# Annotations and Measurements

- Select the annotation icon to get access to the toolbox



Annotations

Select all annotations



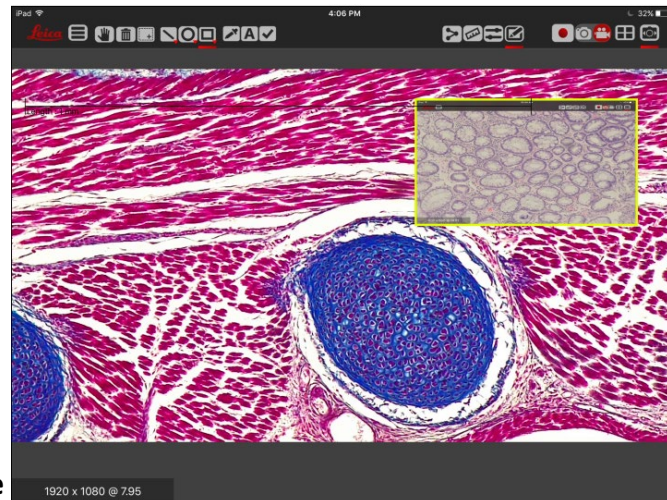
Mark and delete items



Drop downs for line, measurement, arrow, angle

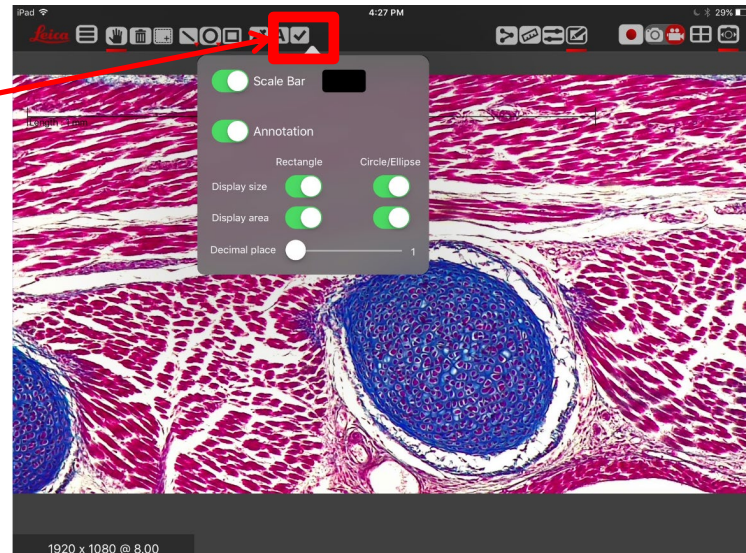
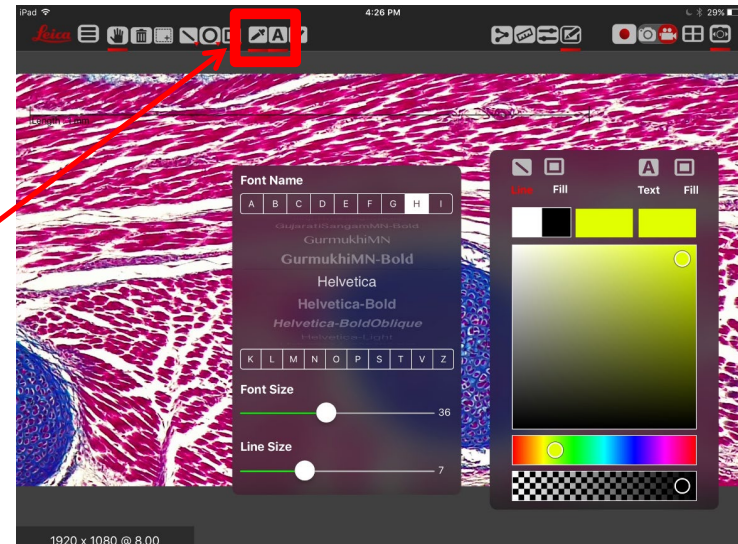
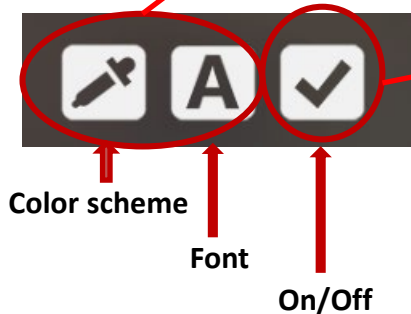
Drop downs for circle, radius, ellipse

Drop downs for rectangle, free hand, text, insert image from your device photo library



# Annotations and Measurements

- Adjust font, color and size of annotations
- Turn on or off annotations, scale bar, measurement values, # of decimals for measurements





# Still and Video Capture

- Select Still or Video Capturing



Acquire

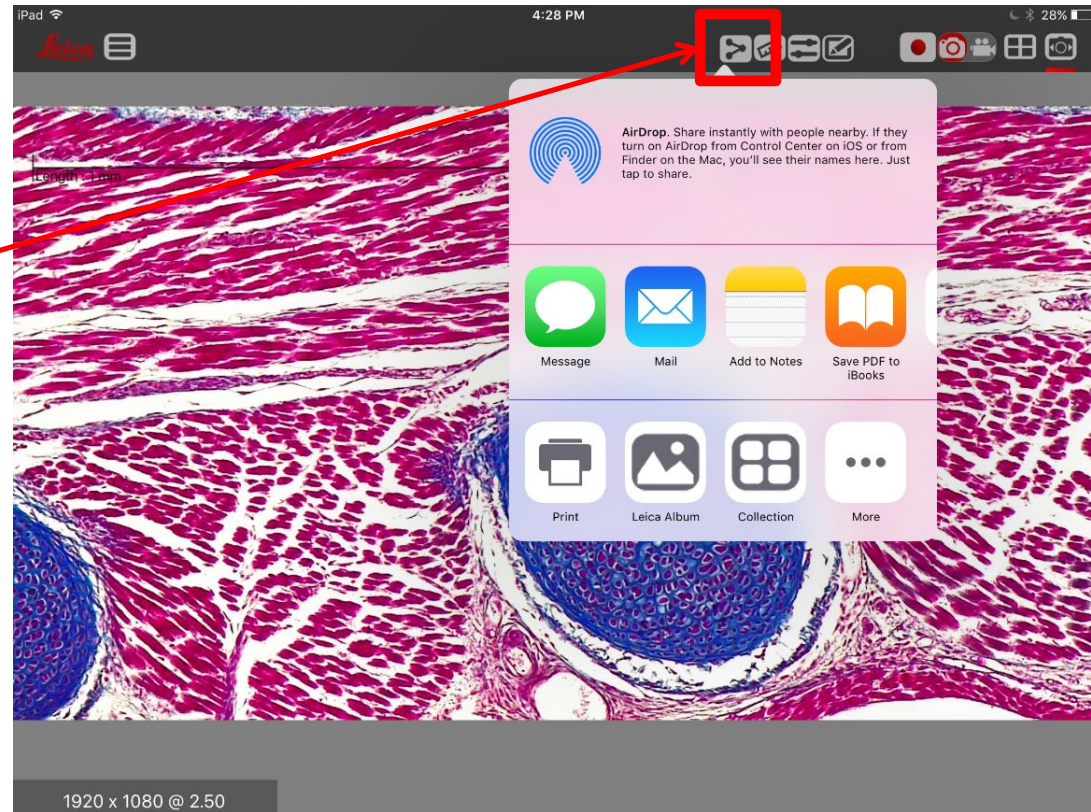
Still or Video mode  
(slider selection)





# Share

- Share the image from Live Image View or send to device photo library or another collection.

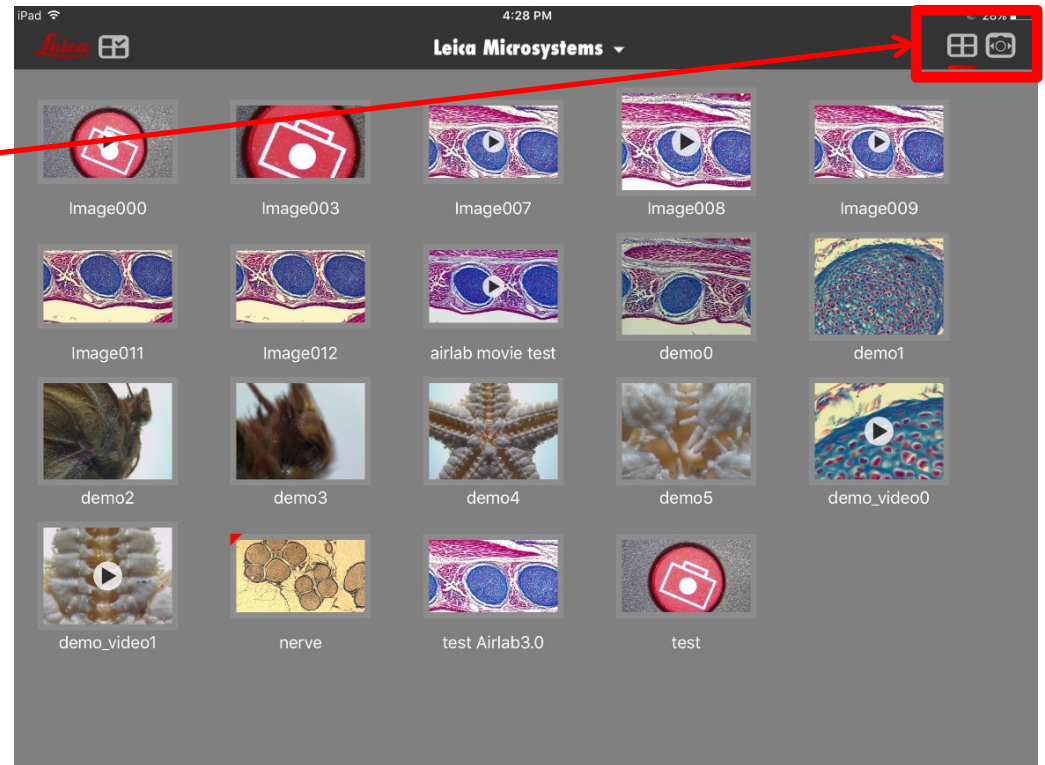


# Gallery View

- Return to Gallery View



↑  
**Gallery View**

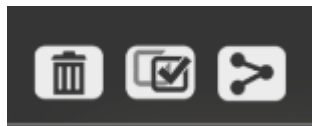


# Select a Gallery Image

- Select a thumbnail image for an action



Select an image



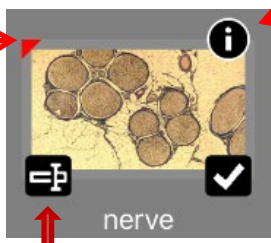
Trash

Share

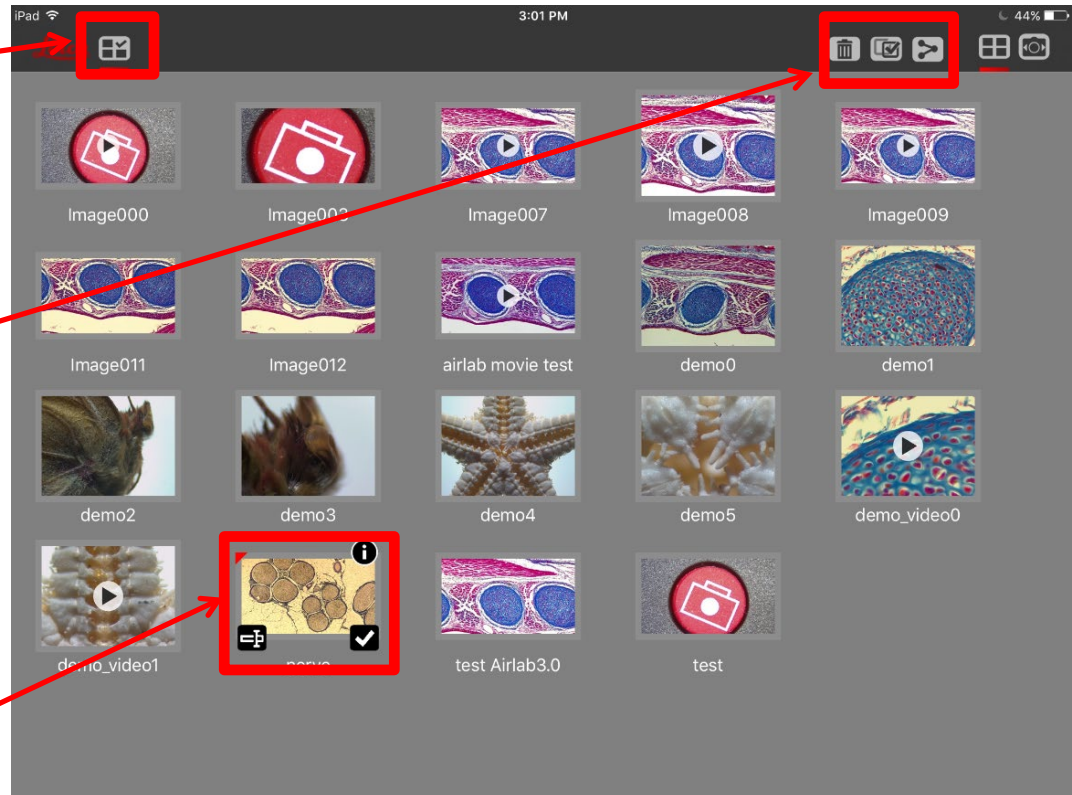
Select all or none

View Image  
Data

Indicates image  
contains  
annotations



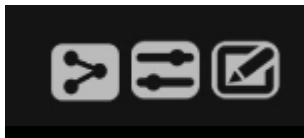
Change image  
name





# Select a Gallery Image

- Tap a Gallery Image to view in full screen for Sharing, Image adjustments, or annotations



↑  
Share

↑  
Image adjustments

↑  
Annotate



# From Eye to Insight



## Leica AirLab Icon Guide