



Leica DFC500 Camera
Software
Release Notes V 7.5.1



Leica DFC500 Camera

Release Notes V7.5.1

Abstract

This document describes the V7.5.1 release of the Leica Digital Camera Software for the Leica DFC500 camera. You should read this document before installing your copy of this software.

Leica DFC500 cameras use the FireWire interface and the Leica DFC500 Camera software package includes software, drivers and user guides for setting up and using these cameras.

All reasonable steps have been taken to ensure that this publication is correct and complete, but should any user be in doubt about any detail, clarification may be sought from Leica Microsystems (Switzerland) Ltd, or their accredited representative. The information in this document is subject to change without notice and should not be construed as a commitment by Leica Microsystems (Switzerland) Ltd. Leica Microsystems (Switzerland) Ltd accepts no responsibility for any errors that may appear in this document.

© Leica Microsystems (Switzerland) Ltd, 2012.

All rights reserved. The contents of this publication may not be reproduced in any form, or communicated to a third party without prior written permission of Leica Microsystems (Switzerland) Ltd.

Due to a policy of continuous development, we reserve the right to change specifications without notice.

Microsoft and Windows are trademarks of the Microsoft Corporation.
Apple, Mac, Macintosh and FireWire are trademarks of Apple Computer Inc.

Date: April 2012

Issue: 3

Table of Contents

1	Introduction	4
2	Installation	4
3	Reason for this Release	5
4	System Requirements	5
5	Changes in This Release	6
5.1	Features in V 7.5.1	6
5.2	Fixes in V 7.5.1	6
6	Changes in Previous Releases	7
6.1	Features in V 7.5.0	7
6.2	Fixes in V 7.5.0	7
6.3	Features in V 7.4.0	7
6.4	Fixes in V 7.4.0	7
6.5	Fixes in V 7.3.0	7
6.6	Features in V 7.2.0	8
6.7	Fixes in V 7.2.0	8
6.8	Features in V 7.1.0	8
6.9	Fixes in V 7.1.0	8
6.10	Features in V 7.0.0	8
6.11	Versions V 6.12.1 and earlier	8
7	Known Limitations	9
7.1	FireWire controllers	9
7.2	Windows 7 or any systems with 4 GB memory or larger	9

1 Introduction

This document supports the release of Leica DFC500 Twain version 7.5.1 and supports the Leica DFC500 Camera in Windows.

Please identify the type of camera that you are using before installing the software from this release.

If in doubt, check for the software specific to your camera at the Leica Microsystems website, www.leica-microsystems.com

Uninstall any previous version of Leica DFC500 Twain before installing a new version.

2 Installation

Operation of the software is detailed in your Quick Start Guide and Image Acquisition Guide and can be found in Start>(All) Programs>Leica Digital Cameras after installation (requires a pdf reader to open files, eg Acrobat Reader).

If you are installing from the LAS DVD, you should be presented with options to install the software or browse the disk.

If auto-run is disabled in your computer or the disk fails to run, open Windows Explorer for the disk and double-click "LASMMenu.exe".

3 Reason for this Release

This version releases new functionality and maintenance that has taken place since the release of version V7.5.0.

4 System Requirements

Supported Operating Systems

Windows 7 Professional or Ultimate - 32 or 64 bit – see [Known Limitations](#)

Windows Vista Business with Service Pack 2 - 32 bit only

Windows XP Professional Edition with Service Pack 3 - 32bit only

Please use the latest Service Packs

Please Note:

You will need Power User or Administrative rights for installation.

Computer

The recommended PC specification is as follows:

- Processor: Intel Core i-series or Intel Core-Duo at 2.5 GHz or faster
- Memory: 1GB RAM (2GB for Vista & Windows 7) - see [Known Limitations](#)
- Graphics: 256Mb RAM supporting 32 bit (shared memory is not recommended)
- Display Monitor: 19in @ 1280 x 1024
- 4-pin or 6-pin or 9-pin FireWire OHCI port - see [Known Limitations](#) or free PCI slot (for addition of FireWire interface)

Laptops with 4-pin FireWire ports require the Leica Laptop Power Kit to power Leica DFC cameras (12730188)

Laptops and notebooks with PCI Express slots should use the FireWire-B Notebook Kit (12730446)

FireWire B cameras can be connected to FireWire A ports and vice-versa using a bilingual A->B cable (12730187).

DVD drive, or internet connection for download.

5 Changes in This Release

5.1 Features in V 7.5.1

Start Menu: The Leica DFC500 Twain uninstall link from the Start Menu has been removed. The software can still be removed in the Control Panel>Programs and Features (Add/Remove Programs).

Leica FireWire Driver: The Leica FireWire driver installed with this software is version 1.39.0.

5.2 Fixes in V 7.5.1

Auto Gamma/Black/White: Some auto gamma/black/white settings caused fluctuating brightness levels. This is fixed.

6 Changes in Previous Releases

6.1 Features in V 7.5.0

Color Calibration: The Leica DFC500 supports creation of color calibrations. Please read the DFC Image Acquisition Guide for more details.

The default calibration is balanced for 3200'K light source.

Exposure: The default startup is in auto-exposure mode.

Windows Start menu items have moved to Leica Digital Cameras.

DFC500 Twain now includes the Leica FireWire driver. During the installation process, you will be asked to connect your camera. Once connected, the installation will continue and the Leica FireWire driver will be activated automatically.

Run the Leica FireWire Selector if cameras are attached to other existing FireWire cards or new FireWire cards are added later.

6.2 Fixes in V 7.5.0

Power Save modes: Some Intel i-processors power saving options caused some corrupt live image and capture errors in Vista and Windows 7. This is fixed by introduction of a new option "High Performance with C-States disabled" that is activated automatically when the camera is running.

Image Capture in LAS: Capture errors in LAS due to memory requirements have been reduced.

6.3 Features in V 7.4.0

Leica DFC500 supports a separate installer.

6.4 Fixes in V 7.4.0

Exposure controls: Long exposures sometimes waited until the end of the exposure time before further adjustment was possible. This has been fixed.

White Balance: White Balance sometimes produced slightly pink images. This has been fixed.

Zoom Focus: With Zoom Focus on, the LAS scale bar sometimes changed to a different length. This is fixed.

Memory >= 4GB: Some systems do not display all its resolutions. This has been fixed by installing the Leica FireWire Driver - see [Known Limitations](#).

Windows7: Some systems do not recognise the DFC500 or do not show all its resolutions. This has been fixed by installing the Leica FireWire Driver - see [Known Limitations](#).

6.5 Fixes in V 7.3.0

Chinese & Japanese characters: These texts now display correctly in other language Windows OS.

Leica DFC500: The image type was not remembered at close. This is fixed.

6.6 Features in V 7.2.0

Windows 7: Support for Windows 7 Operating System for Leica DFC cameras.

6.7 Fixes in V 7.2.0

Leica DFC500: Multi-shot acquisition sometimes failed in LAS with an out of memory error. This is fixed.

6.8 Features in V 7.1.0

Language: The DFC500 Twain User Interface can now be switched between languages while it is running.

6.9 Fixes in V 7.1.0

Japanese installer: The last screen of the installer in Japanese produced incorrect text, and is now fixed.

Japanese and Chinese text was not always displayed correctly in the Twain UI. This is fixed.

6.10 Features in V 7.0.0

Task bar icon: There is a new Windows task bar icon while DFCTwain is running. This is in addition to the icon for the host application.

6.11 Versions V 6.12.1 and earlier

These versions did not fully support Vista or 64 bit operating systems. Please ask Leica support for any further information.

7 Known Limitations

7.1 FireWire controllers

For the Leica DFC500 camera, a powered 1394a 6-pin FireWire OHCI port is required. As FireWire interface boards from some manufacturers have issues with non-Leica drivers, we recommend the use of the FireWire board in the list below.

The following card is recommended:

Leica Art Nr	Manufacturer	Model	Ports, Type of Card	Chipset
12 730 183	LaCie	130822	1394a&b, PCI-32	VIA

The Leica DFC500 camera is supplied with a suitable FireWire cable.

The FireWire 1394a Laptop power kit (12 730 188) is needed for laptops or notebooks, which have a non-powered 4-pin (iLink) or 6-pin FireWire port.

The FireWire 1394b Notebook kit (12 730 446) is needed for notebooks which have a PCI Express slot but do not have an on board FireWire port.

The electronic circuits on the PCI card and the circuits of your computer are sensitive to static electricity and surges.

Take the following precautions:

- Switch off your computer and all peripheral equipment (including the monitor).
- Pull out the power cord.
- Open the computer case in accordance with the instructions provided by the manufacturer.
- Discharge static electricity from your body by touching an earthed metal object before installing the PCI card.
- Avoid touching the components, conductor paths and contact pins.
- Find a suitable vacant PCI slot and remove the slot cover if still attached.
- Carefully insert the PCI card into the slot.
- Ensure that the card is correctly inserted, that all pins on the card have made contact and that the PCI card does not touch any other card.
- Connect the PCI card to the computer's internal power supply.
- Secure the PCI card to the computer with a screw or retaining bracket.
- Close the computer case in accordance with the instructions provided by the manufacturer.
- Reconnect the power cord.

7.2 Windows 7 or any systems with 4 GB memory or larger

Some FireWire controller cards may not work correctly with the Leica DFC500 camera in Windows 7.

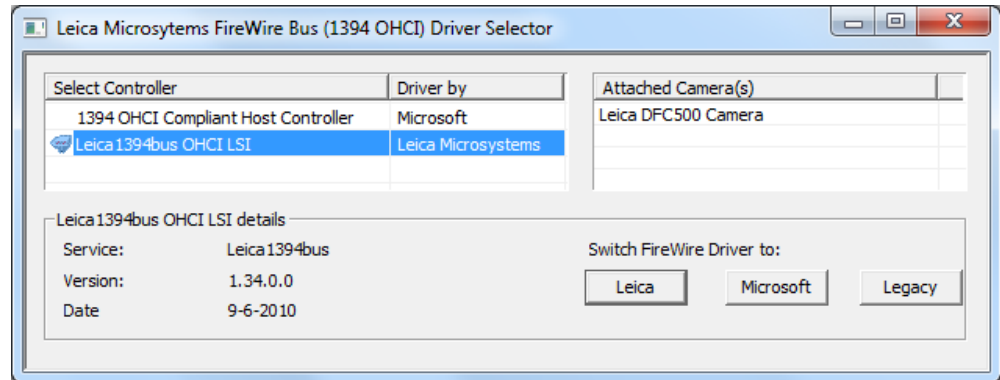
Any systems which have 4 GB of memory or larger may have similar issues.

If you are experiencing either of these problems, please modify the FireWire controller driver in your computer with the Leica FireWire Driver.

The Leica FireWire Driver is a replacement for the default Windows FireWire driver for OHCI 1394 Host Controllers. It fixes some potential instability in the Microsoft driver resulting in the loss of camera live image or connection.

This installer installs a FireWire driver application which gives you the option to select the Leica driver, or revert to the Microsoft driver, or, in Windows 7 systems, the Microsoft Legacy driver.

Once installed, the application can be started by opening Start>(All)Programs>Leica Digital Cameras>Select Leica FireWire driver.



Other issues

- It is advised to use the Leica Camera Power kit (12730188) with Leica DFC500 cameras.
- Firmware for the Leica DFC500 should be at least version 3.0. Please contact Leica Support for details on how to update the firmware.
- While a shading reference is active, it is not possible to make a separate White Balance or change the color balance.

Leica Microsystems (Switzerland) Ltd
Stereo and Macroscopy Systems
CH 9435 Heerbrugg
Switzerland

Hotline: +44 1223 401824
Fax: +44 1223 210692
di.support@leica-microsystems.com
www.leica-microsystems.com

