

## PATHOLOGY SOLUTION SUITE

### Feel the difference

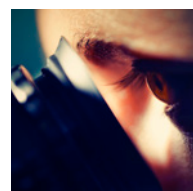
Pathologists must ensure an efficient, fast processing of specimens to meet the demands and strict deadlines of hospitals and clinics. Sometimes they spend hours working with a microscope. This demanding work style can lead to physical discomfort and repetitive strain injury (RSI) due to an uncomfortable posture while performing recurrent motions.

Such motions can be adjusting the stage and focus position as well as changing objectives. Additionally, looking through the eyepieces over long periods of time with large fluctuations in light intensity can cause eyestrain. Pathologists can benefit from a solution that allows them to maintain a comfortable position at a microscope and achieve improved efficiency for diagnoses.

### Advantages of the Pathology Solution Suite

Work in comfort, reduce the risk of strain, and achieve an improved efficiency during microscopic examination.

- > Comfortable posture, optimal hand positioning, and less risk of strain due to the symmetrical layout of the adjustable ergonomic stage and focus controls, as the knobs are equidistant from the user.
- > Reduced risk of eyestrain from balanced light intensity – no need to continuously adjust brightness to prevent large fluctuations in light.
- > More efficient workflow thanks to minimal repetitive motions and fast objective change with toggle mode. Knobs for focus and stage control are placed close together.



## Find the solution for your needs



DM3000 Microscope - Professional Configuration

The Pathology Solution Suite provides three complete workflow solutions to help you work comfortably and ensure efficient and fast diagnoses.

- > **Standard:** Ideal when performing an occasional diagnosis of specimens where viewing over a selected portion of the slide is necessary.
- > **Advanced:** Ideal for a daily, steady workload performing diagnosis of specimens which are viewed over most of the slide. Also suitable for simultaneous viewing by multiple observers (multiple viewing system) due to its high intensity illumination.
- > **Professional:** Ideal for a high workload performing diagnosis of specimens which require high resolution of detail and viewing over the complete slide. Also suitable for image documentation – can be equipped with a camera.

Pathology Standard Configuration (DM2000 microscope)	Pathology Advanced Configuration (DM2500 microscope)	Pathology Professional Configuration (DM3000 microscope)
Diagnosis requiring standard resolutions (routine diagnoses)	Diagnosis requiring standard resolutions, wide range of magnification (routine diagnosis, wide range of specimens)	Diagnosis requiring high resolutions, wide range of magnification – view small details (challenging diagnoses)
Occasional use (frozen sections in surgical suite)	Average workload (several times per day)	High workload (all day)
Viewing part of slide: Standard field of view (up to 5 mm)	Viewing most of slide: Moderate field of view (up to 8.8 mm)	Viewing complete slide: Large field of view (up to 10 mm)
Ergonomics & comfort: <ul style="list-style-type: none"> <li>&gt; Comfortable posture with fixed position viewing angle</li> <li>&gt; Control knobs are in close proximity thanks to the symmetrical layout</li> </ul>	Ergonomics & comfort: <ul style="list-style-type: none"> <li>&gt; Comfortable posture throughout the workday due to the adjustable viewing angle</li> <li>&gt; Control knobs are in close proximity provided by the symmetrical layout and adjustable stage (telescopic) and focus control (torque)</li> </ul>	More ergonomics & comfort: <ul style="list-style-type: none"> <li>&gt; Comfortable posture throughout the workday due to the adjustable viewing angle</li> <li>&gt; Control knobs are in close proximity provided by the symmetrical layout and adjustable stage (telescopic) and focus control (torque)</li> <li>&gt; Reduced eyestrain thanks to balanced light intensity</li> <li>&gt; Fast objective change with toggle mode</li> </ul>
	Simultaneous viewing by multiple observers, e.g. training, consultation (optional system)	Digital imaging for documentation and live-image viewing on monitor (optional digital camera)

