

How to make a Point to Point measurement

Purpose

This document describes how to use the, recently added, Two-Point Measurement feature to make a quick point to point measurement with the Leica DMS1000.

This new feature allows one to make a single, simple measurement between two points directly on the monitor while still in the stand-alone mode (HD). This feature will allow users more flexibility during quality control checks of components.

To benefit from this feature, the Leica DMS1000 must have firmware (FW) update V1.6.00, which can be downloaded from the Leica Product website.

Requirements:

1. Leica DMS1000 with FW version V1.6.00 installed. If you need to install this update, please to the download section of the Leica DMS1000 Product webpage.
2. A remote control that is already paired with the Leica DMS1000
3. A HD monitor with HDMI connector – best results with 19” or larger.

Set up the Leica DMS1000 for Measurement:

Before you begin making measurements, you must first setup the Leica DMS1000 with the correct parameters and activate the Two-Point feature.

Follow the following steps to prepare your unit for standalone measurement.

1. Make sure the unit is in stand-alone mode (HD is selected) and it is connected to a HDMI monitor (recommend 19-inch or larger)
2. Using the remote, press the Menu key to activate the drop down menu.
3. Use the arrow keys on the remote to highlight the “MEASUREMENT” item (see Photo 1)

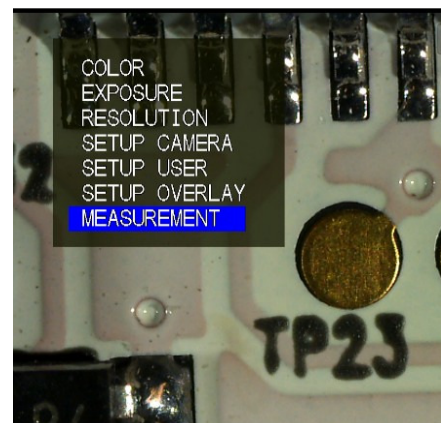


Photo 1 – Select *MEASUREMENT*

4. Ensure the selected OBJECTIVE matches the one you are using, otherwise the measurement results will not be correct. Photo 2. Use the left/right arrow keys to navigate through the objective list.



Photo 2 – Select correct OBJECTIVE

5. Next, turn on the Two-Point Feature by highlighting TWO POINT, then pressing OK on the remote control. Use the left/right arrow keys to toggle on/off the feature. Photo 3.
6. You can also setup the line type and the font size for the two point measurement line. See Photos 4 and 5.
7. The line color and displayed units can also be set on this menu. Refer to Photo 3, 4 or 5.
8. The Leica DMS1000 is ready to measure. Continually press the Menu button on the remote until you are back to the *live* view.

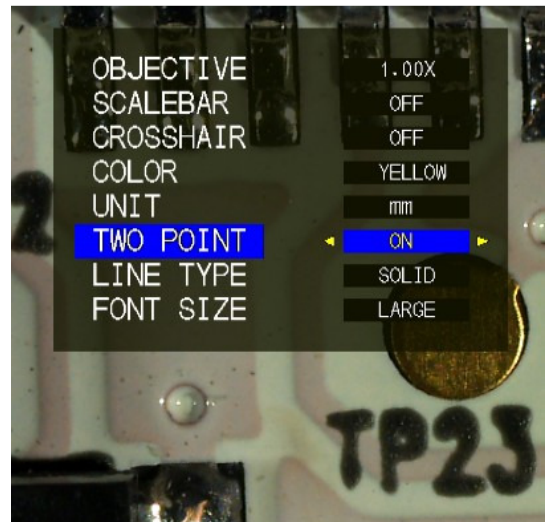


Photo 3 – turn on TWO POINT



Photo 4 – choose line type



Photo 5 – select font size

Make a Measurement:

Once the Leica DMS1000 has been setup and the Two-Point feature is turned on, a super-imposed line should appear on the live screen image. You should see that one of the two points will be blinking, indicating that this is the active (moveable) point. Notice, the measurement is updated live so you can see the actual measurement as you move the points.

1. Using the any of arrow keys move the active point (blinking) to the desired start point. Photo 6. Once set, press OK on the remote to fix the first position activate the second point.

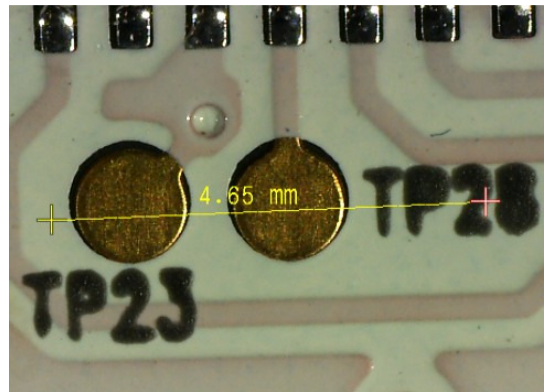


Photo 6 – set the first point

2. With the second point blinking, use the arrow keys to move point to the desired end point. Photo 7. Once set, press OK on the remote to fix the end position. This will also activate both points – so that the entire line can be moved.

3. If desired, you can move the complete line to another point on the live image, when both points are blinking. This can be ideal for comparison measurements or used as a standard for future checks. Photos 8 and 9.

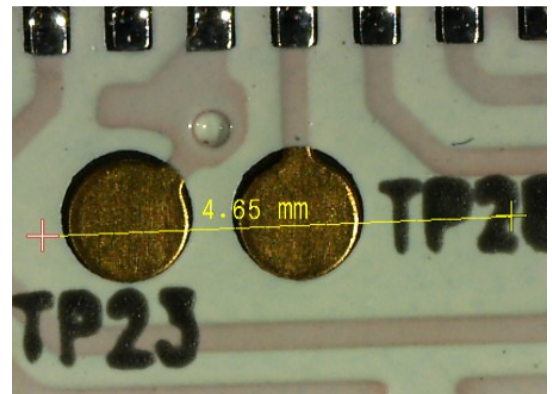


Photo 7 – set the second point

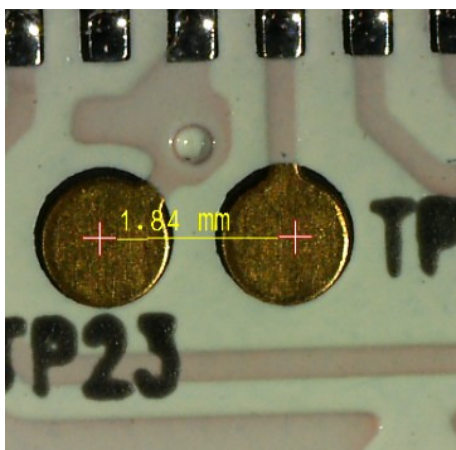


Photo 8 – move line

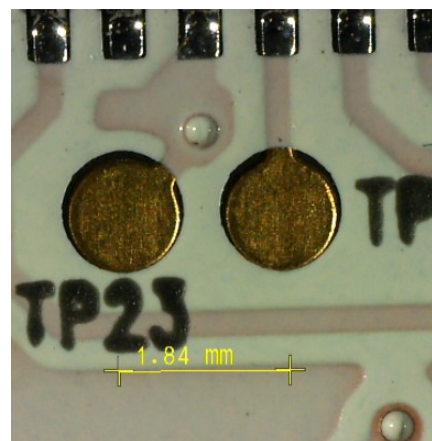


Photo 9 – move line

4. To fix the line and end measurement, press OK on the remote.
5. To make another measurement or adjust the points again, press OK and repeat Steps 1 to 4.
6. Only one measurement line can be made at a time.

ADDITIONAL NOTE: To save the display measurement with the captured image, set the OVERLAY MODE to – LIVE + IMG. To do this press the Menu key on the remote, select “SETUP OVERLAY” and then select OVERLAY MODE.