

From Eye to Insight



Software for the Microscopy Classroom

MAKING CLASS INTERACTIVE AND INSPIRING

AirTeach Software Bundle



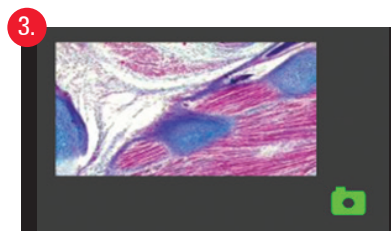
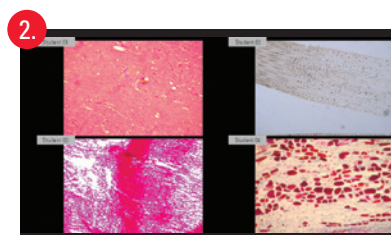
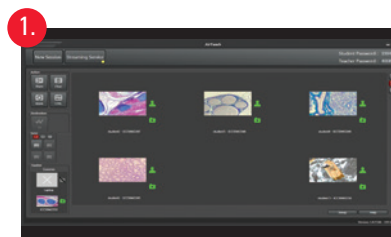
DIGITAL MICROSCOPY CLASS

The AirTeach software from Leica Microsystems provides teachers with a tool to share knowledge efficiently, and have everybody on the same page, all the time.



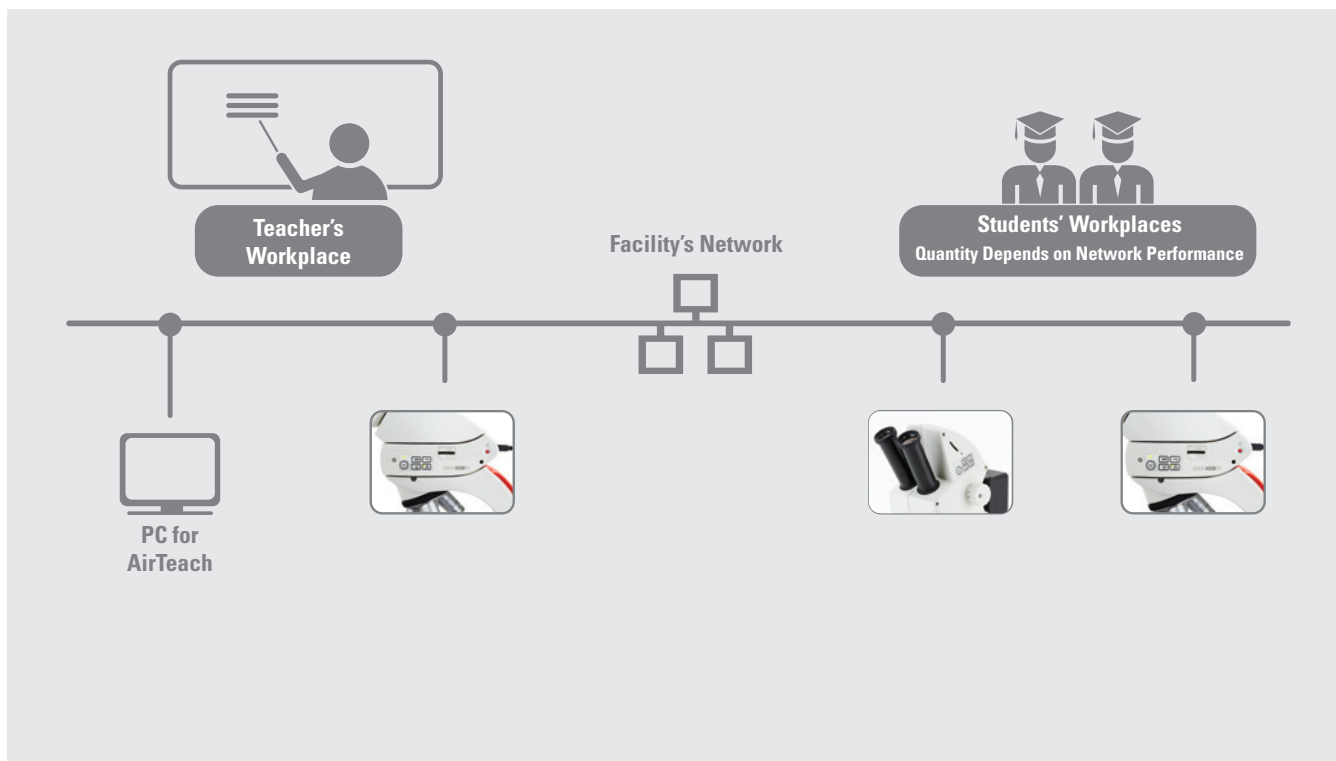
AIRTEACH EMPOWERS TEACHERS TO:

1. See a thumbnail view of students' microscope images in the layout of the classroom.
2. Share up to four images on a large display or projection to allow a comparison of students' findings.
3. Confirm cameras are logged in to ensure participation.



CHECKLIST FOR IT INFRASTRUCTURE

1. Laboratory equipped with cameras from Leica Microsystems which are Ethernet compatible. Select live resolution and maximum frame rate limit suitable for the network performance.
2. Ethernet connections for all microscope workplaces
3. For cameras and PCs: 1 Gigabit Ethernet network ports
4. Dedicated network switch for the classroom.
5. Network capacity of 5 MBit/s per camera is required for a camera setting of 800×600 with a framerate of 10 fps.
6. One Windows PC for AirTeach (touchscreen or standard), (see PC specifications below), and one projector or large screen display.
7. Please confirm the following ports are opened within the network where the cameras and PCs are connected by cable:
 - > TCP 80 (HTTP)
 - > TCP 8080 (HTTP)
 - > TCP 8081 (Login, classroom communication)
 - > TCP 8900 (RTSP Proxy Server Management)
 - > TCP 8082
 - > TCP 8085 (HTTP)
 - > UDP 8086 (Broadcasting)
 - > UDP 8554 (RTSP)
 - > TCP 8554 (RTSP)
 - > UDP 554 (RTSP)
 - > TCP 554 (RTSP)
 - > TCP 8555 to 8605
 - > UDP 8555 to 8605
 - > UDP 5353 (Bonjour DNS)
8. PC specifications:
 - > Disable: firewalls, sleep mode, power saving, auto network disconnect modes, and anti-virus programs
 - > Hard drive: 256 GB or larger (SSD preferred but not mandatory)
 - > CPU: Intel Core i7
 - > Monitor: 22" or larger (optional touch screen for AirTeach PC)
 - > Network: 1 GB Ethernet port
 - > Connected to network by cable (Wi-Fi disabled)
 - > Memory: 16 GB
 - > Bonjour installed
 - > AirTeach installed on AirTeach PC and set to extended screen view
 - > Windows 8.1 minimum
 - > 1 GB dedicated stand alone graphics card



Order No.:	13 613 750: AirTeach Software Bundle
Remark	Microscopes and cameras to be purchased separately

