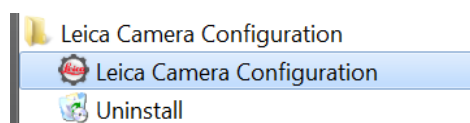
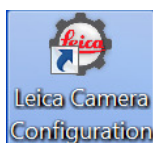
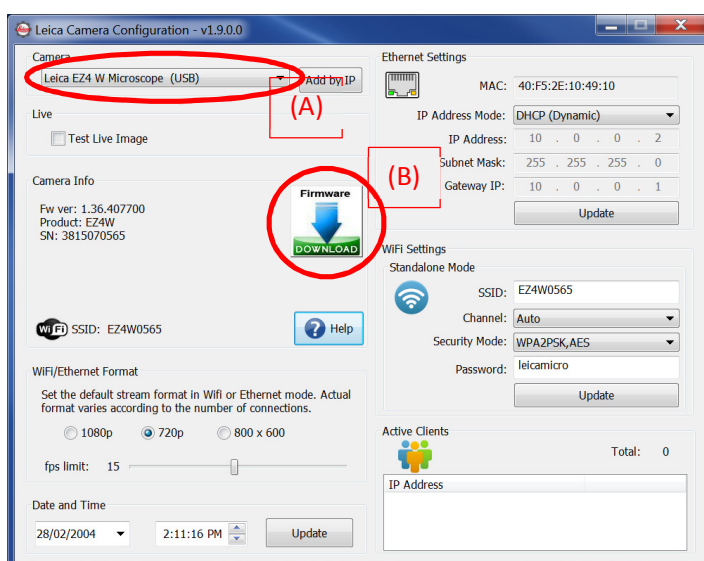


Procedures for Updating Firmware of EZ4 W(E) / ICC50 W(E) / IC90 E / S9i

1. Download the Firmware file for your camera to your PC
2. Download the Leica Camera Configuration program to your PC
3. Install Leica Camera Configuration program
 - a) **Administrator** account is required to execute the installation
 - b) Follow the instructions to complete the installation.
4. Connect the camera to your PC using the USB Cable
5. Switch the camera on and **Place the Camera in USB Mode via the button on the camera/microscope**
6. Launch the Camera Configuration Program from the shortcut on your desktop, or from your program menu.

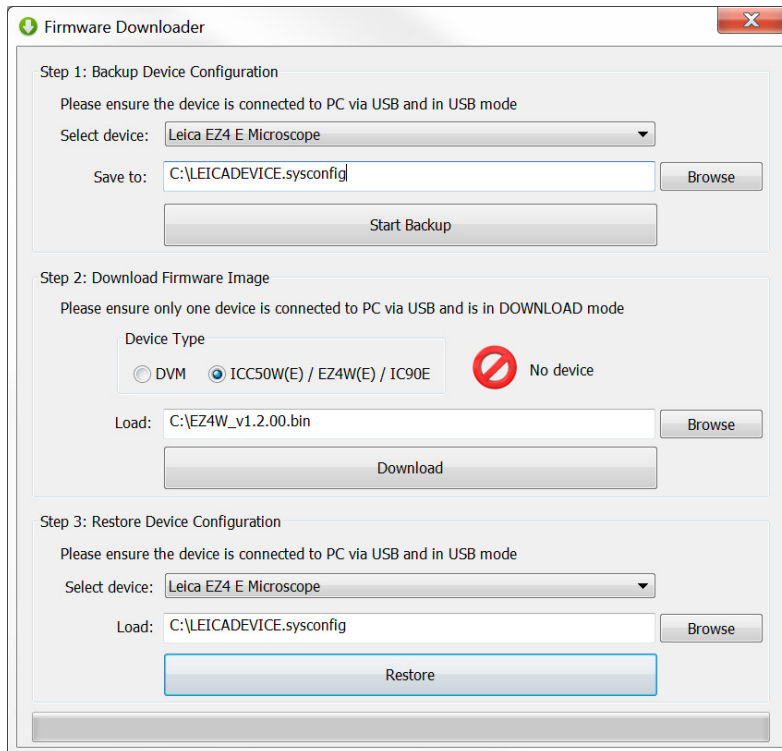


7. You will see a Camera information view with the fields populated with the connected Camera information (field A).



- Click “Firmware Download” button in the Camera Info area to enter the Download Firmware view (field B). The panel below will open.

It's strongly recommended to connect one device only for the whole process.

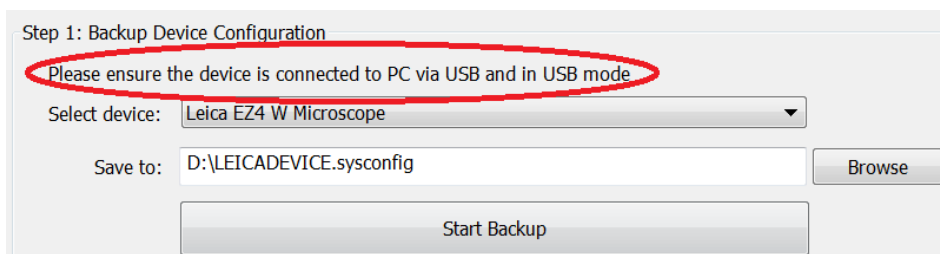


The screenshot shows the 'Firmware Downloader' application window. It is divided into three main sections:

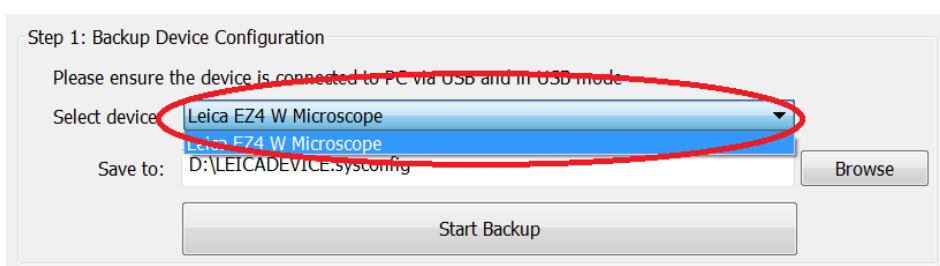
- Step 1: Backup Device Configuration**
Please ensure the device is connected to PC via USB and in USB mode
Select device: Leica EZ4 E Microscope
Save to: C:\LEICADEVICE.sysconfig [Browse]
Start Backup
- Step 2: Download Firmware Image**
Please ensure only one device is connected to PC via USB and is in DOWNLOAD mode
Device Type: DVM ICC50W(E) / EZ4W(E) / IC90E No device
Load: C:\EZ4W_v1.2.00.bin [Browse]
Download
- Step 3: Restore Device Configuration**
Please ensure the device is connected to PC via USB and in USB mode
Select device: Leica EZ4 E Microscope
Load: C:\LEICADEVICE.sysconfig [Browse]
Restore

9. Step 1: Backup the camera configuration before downloading new firmware

a) Please make sure the device is connected to PC via USB and in USB mode



b) Select the target device in the dropdown box, if you have multiple devices connected.

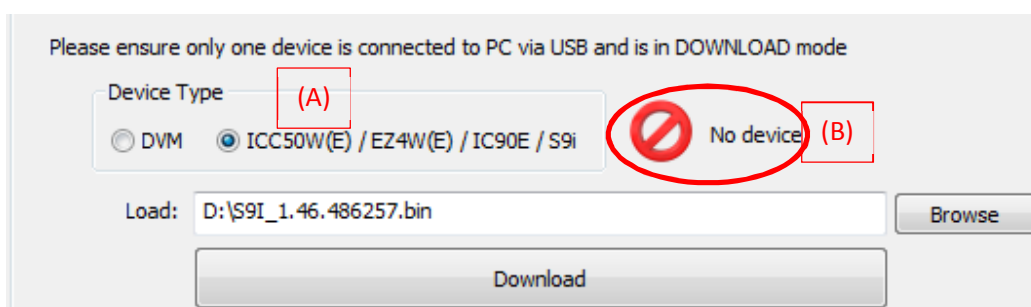


c) Click "Browse" to select the location where you want to put the backup file.

d) Click "Start Backup" and wait until backup is completed.

10. Step 2: Download firmware image

a) Click to select Device Type as "ICC50W(E)/EZ4W(E)/IC90E/S9i" instead of DVM (field A)

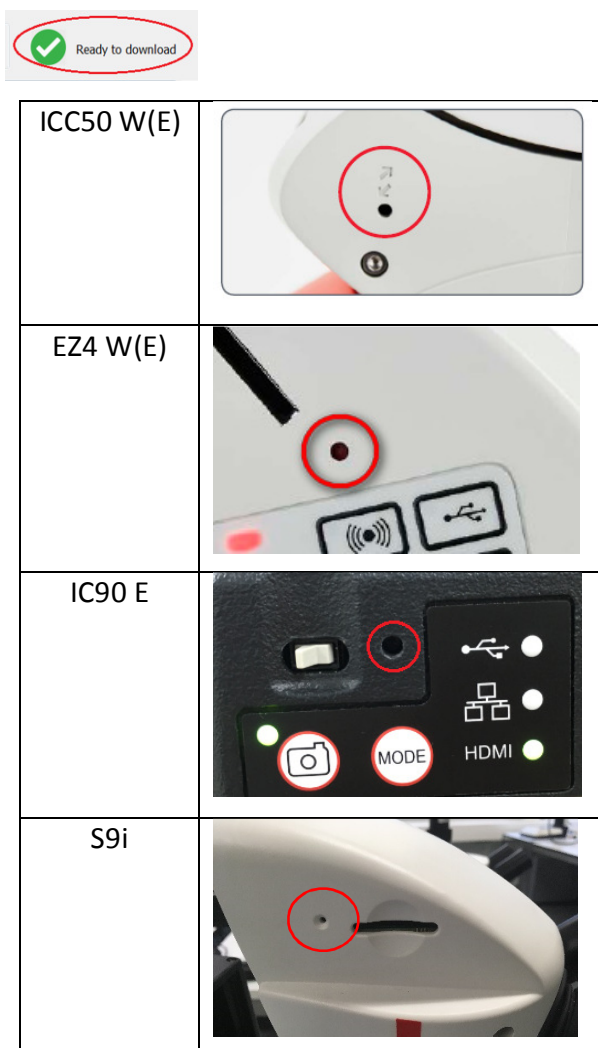


b) Click "Browse" to find the Firmware file

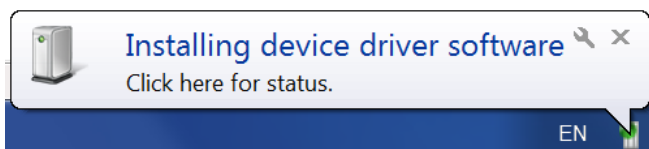
c) Switch the camera off

d) Hold in the hidden service button of the camera with the end of a paper clip and

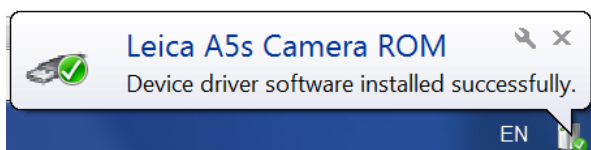
switch on the camera power. Hold the service button until field B turns to:



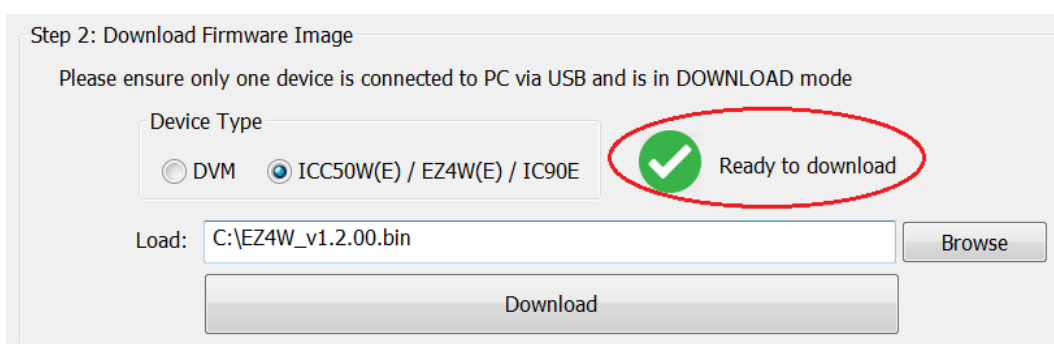
Note: If this is the first time that you connect the camera in download mode, your computer may take a while to load the download driver. You will see the following message in your PC's system tray.



Wait until you see the device driver software installed successfully.



e) When the status icon in the firmware panel changes to green (“Ready to download” in the Step 2 section of the Firmware Downloader dialog, you can release the hidden service button (If the status light remains red, see the “Firmware Download Driver” section below). The dialog should look like the image below:

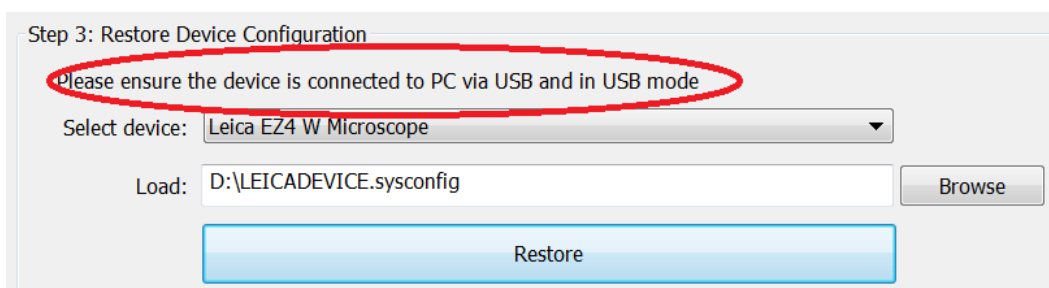


f) Click “Download”. In the status bar at the bottom of the panel you can see the progress of the download.

11. After Download is complete, shut off power to the camera and restart power to camera

12. Step 3: Restore device configuration

a) Make sure the device is connected to PC via USB and is in USB mode.



b) Select the target device if more than one device is connected

c) Click “Browse” to select the backup file created in Step 9 above.

d) Click “Restore” and wait until the restore process is completed.

13. After the Backup restoration is complete, the new firmware is installed. You can check the firmware version in the Camera information view. Please restart your camera to work with the new firmware.

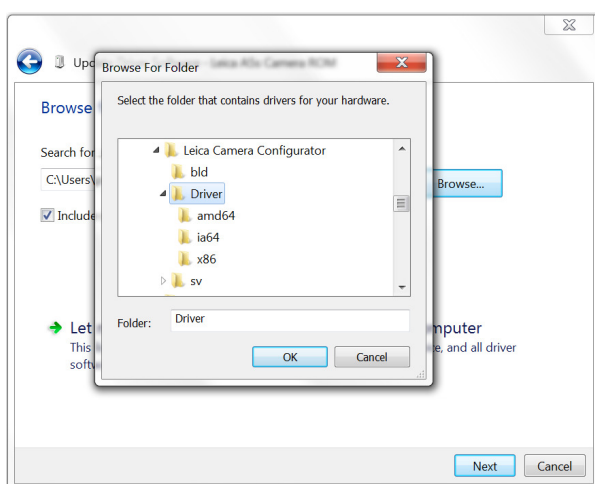
Firmware Download Driver

In order to download firmware image to the camera, the firmware download driver must be installed first. The driver files can be found in the Leica Camera Configuration program directory which you have installed to your PC previously.

If you have properly installed the Leica Camera Configuration program in Step 3 above, the firmware downloading driver for EZ4 W(E), ICC50 W(E), IC90 E and S9i should have already been installed.

You can manually install the driver by following the procedures below, if necessary.

1. Right click “My Computer”
2. Select “Properties”
3. Select “Device Manager”
4. Select “Other Devices”
5. Right Click “Unknown Device”
6. Select “Update Driver Software”
7. Select “Browse my computer for driver software”
8. Browse to “C:\Program Files (x86)\Leica Microsystems\Leica Camera Configurator\Driver”, if you’ve installed the application with default settings. Otherwise, browse to the corresponding installation directory you have specified.



9. Select “OK”
10. Select “Next”
11. Close after installation
12. Refresh your device list. You will no longer see an “Unknown Camera” in the “Other Device” section
13. Start from Step 10 in the **“Procedures for updating Firmware of EZ4 W(E) / ICC50 W(E) / IC90 E / S9i”** above to complete the Firmware download process.