

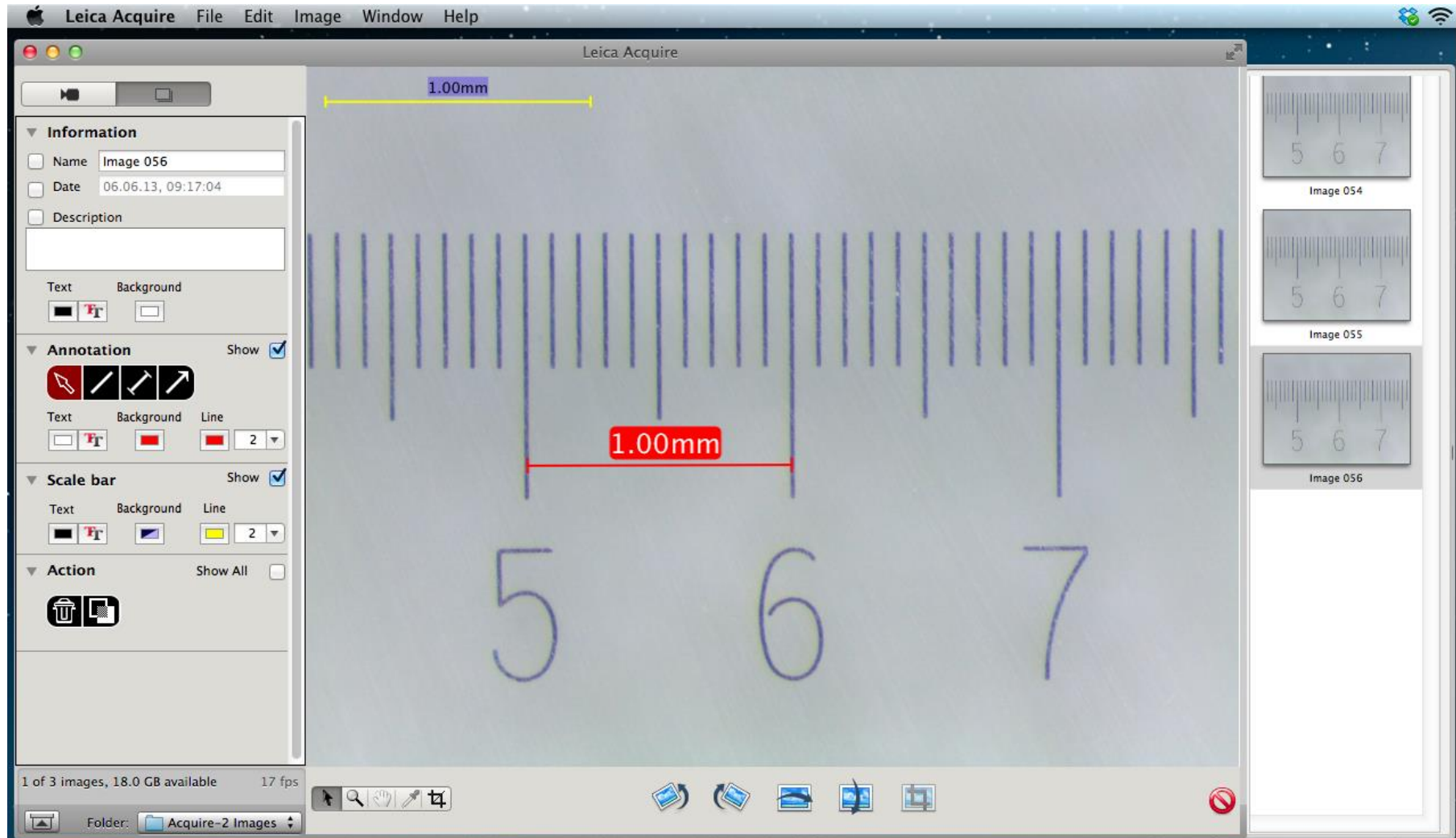
Living up to Life

Leica
MICROSYSTEMS



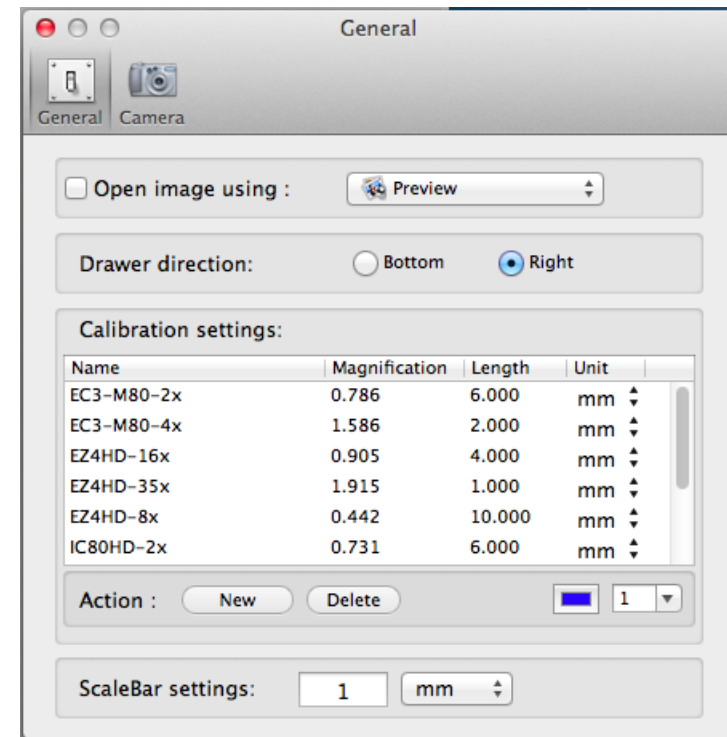
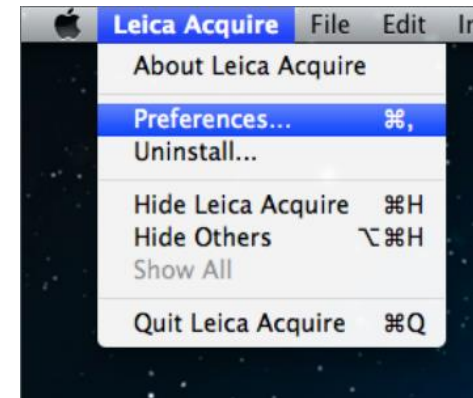
Leica Acquire V2.0 Calibraton & Measurement

Leica Acquire V2.0 offers basic measurement:



How to use annotation & measurement:

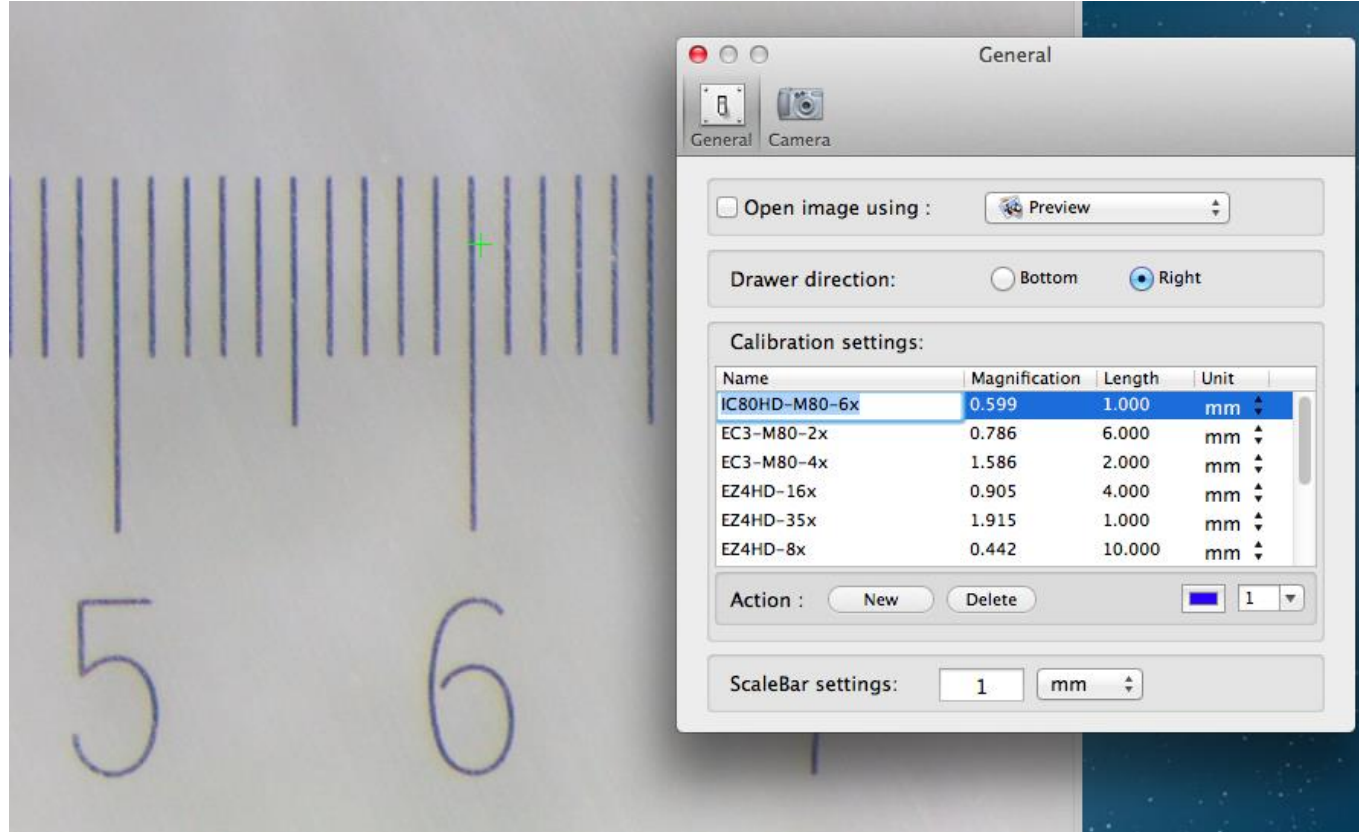
1. Go to the Leica Acquire Menu bar and open the Preferences window
2. In the Preferences window select the General options from the icon bar.
3. Locate the calibration settings. Only when a camera is attached the Action buttons «New» and «Delete» are active.
4. If the list is empty, click on action button «New» to add a new calibration.
5. If you want to adjust an existing calibration in the list, left click with the mouse on the name of the calibration



How to use annotation & measurement:

6. Keep the mouse cursor on the Name of the calibration setting. Note that after a moment, a text box appears which allows you to change the name of the calibration setting.

7. Select a meaningful name for the calibration setting, eg. Magnification at the microscope or selected objective.

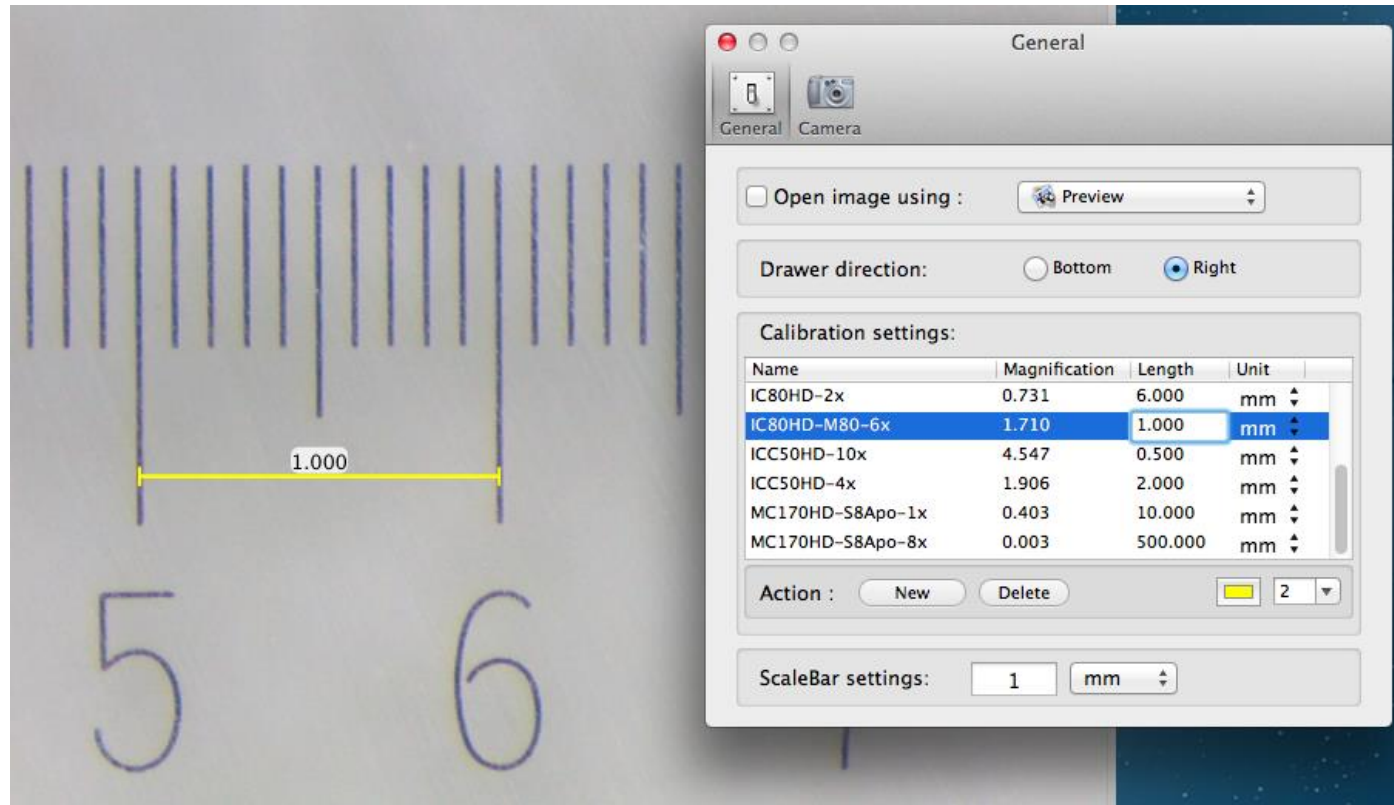


8. Place a ruler under the microscope and focus carefully. Move the setting window out of the live image so you can see the entire live image.

How to use annotation & measurement:

9. Left click with the mouse into the corresponding Length value, and type in the distance value you want to measure on the live image.

10. Note the distance line that appears on the live image when you click on the length value. Drag both ends of the distance line to the corresponding marks on the ruler.



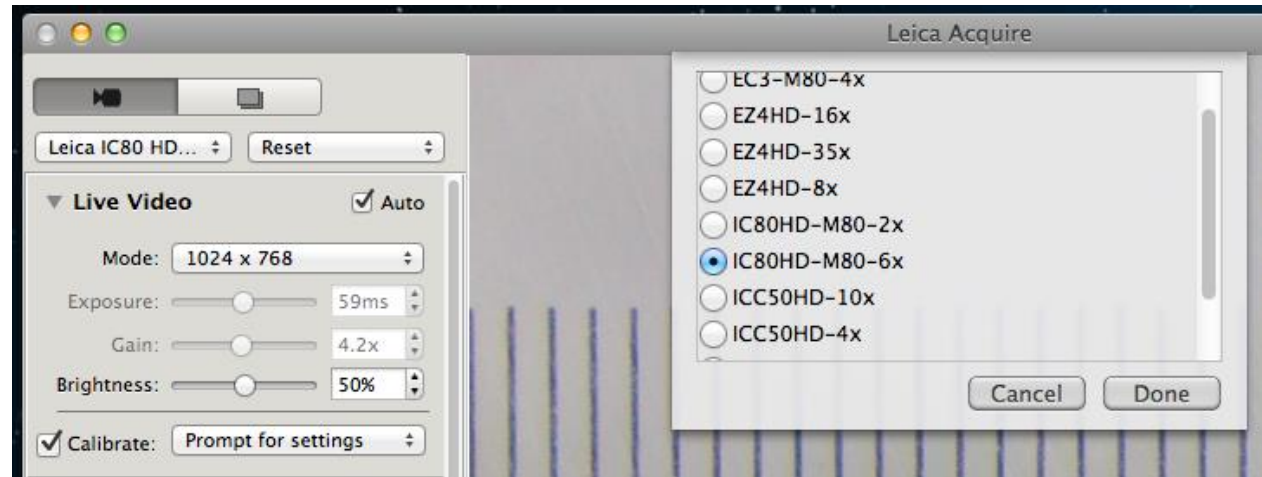
11. Change the color, thickness and measuring unit (mm or inch) of the distance line if needed.

How to use annotation & measurement:

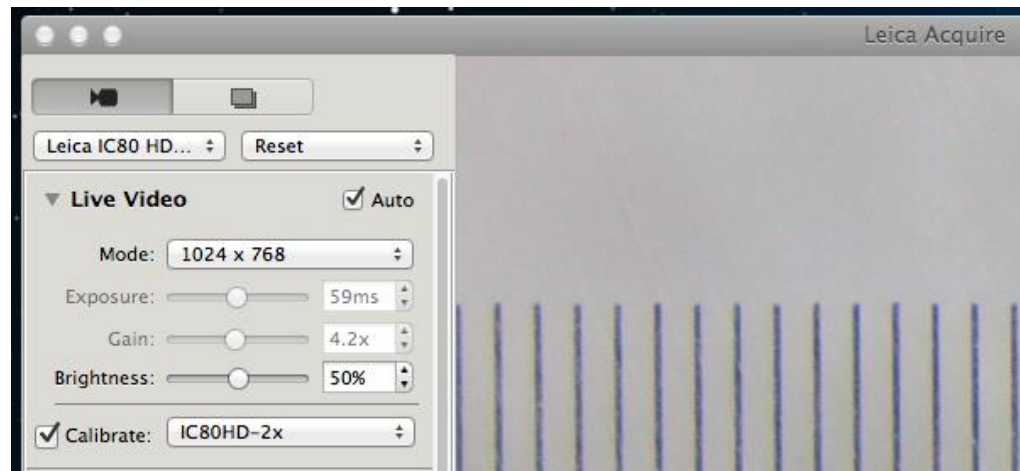
12. In order to confirm the calibration, go to the Live image and activate the «Calibrate» checkbox.

13. When you select «Prompt for settings» then a pop up dialog box appears each time you press the Acquire button.

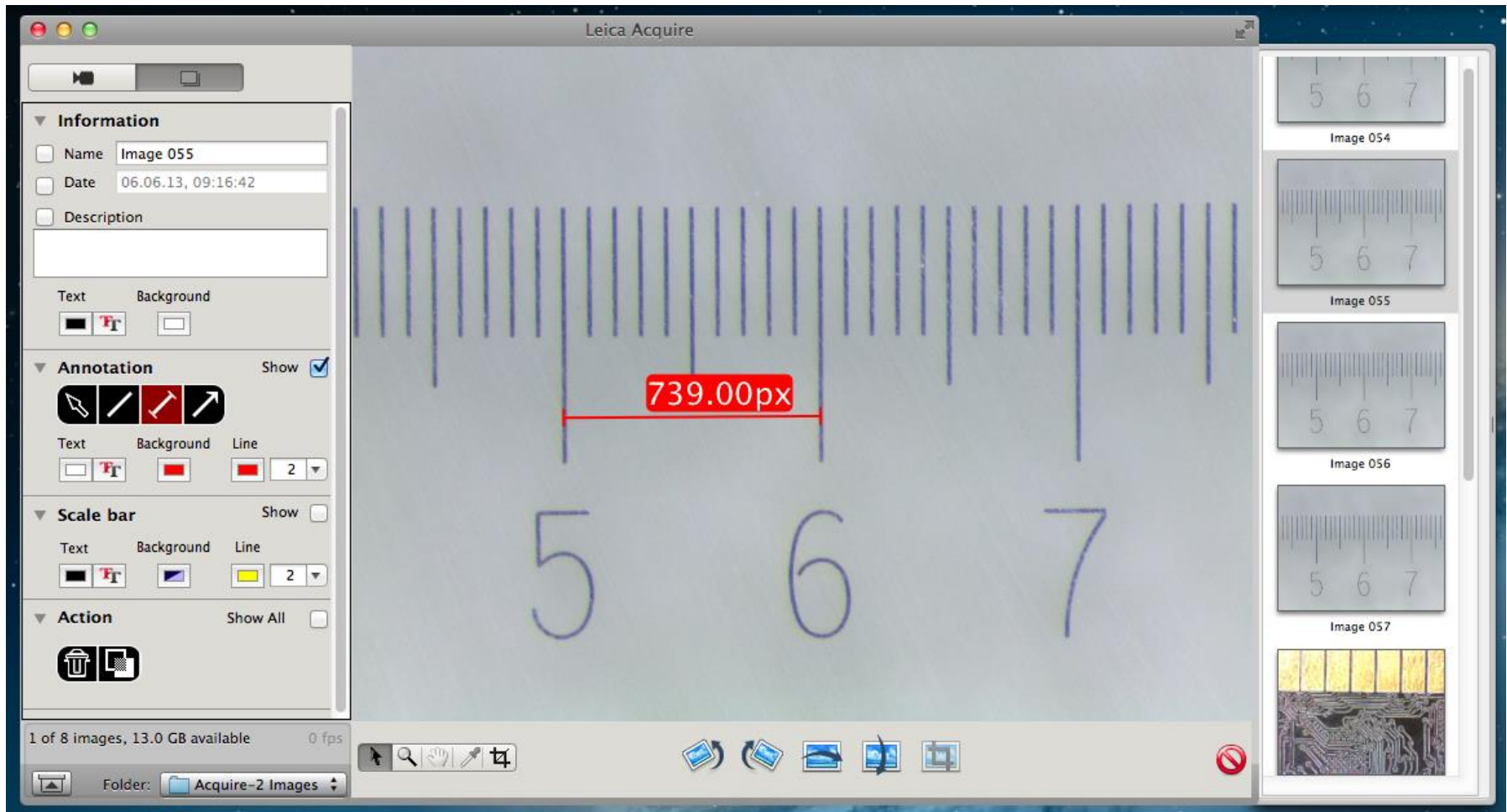
14. If you want to avoid the pop up dialog box to appear, you can preselect the calibration setting next to the Calibrate checkbox.



Select the just entered calibration name and click on «Done»

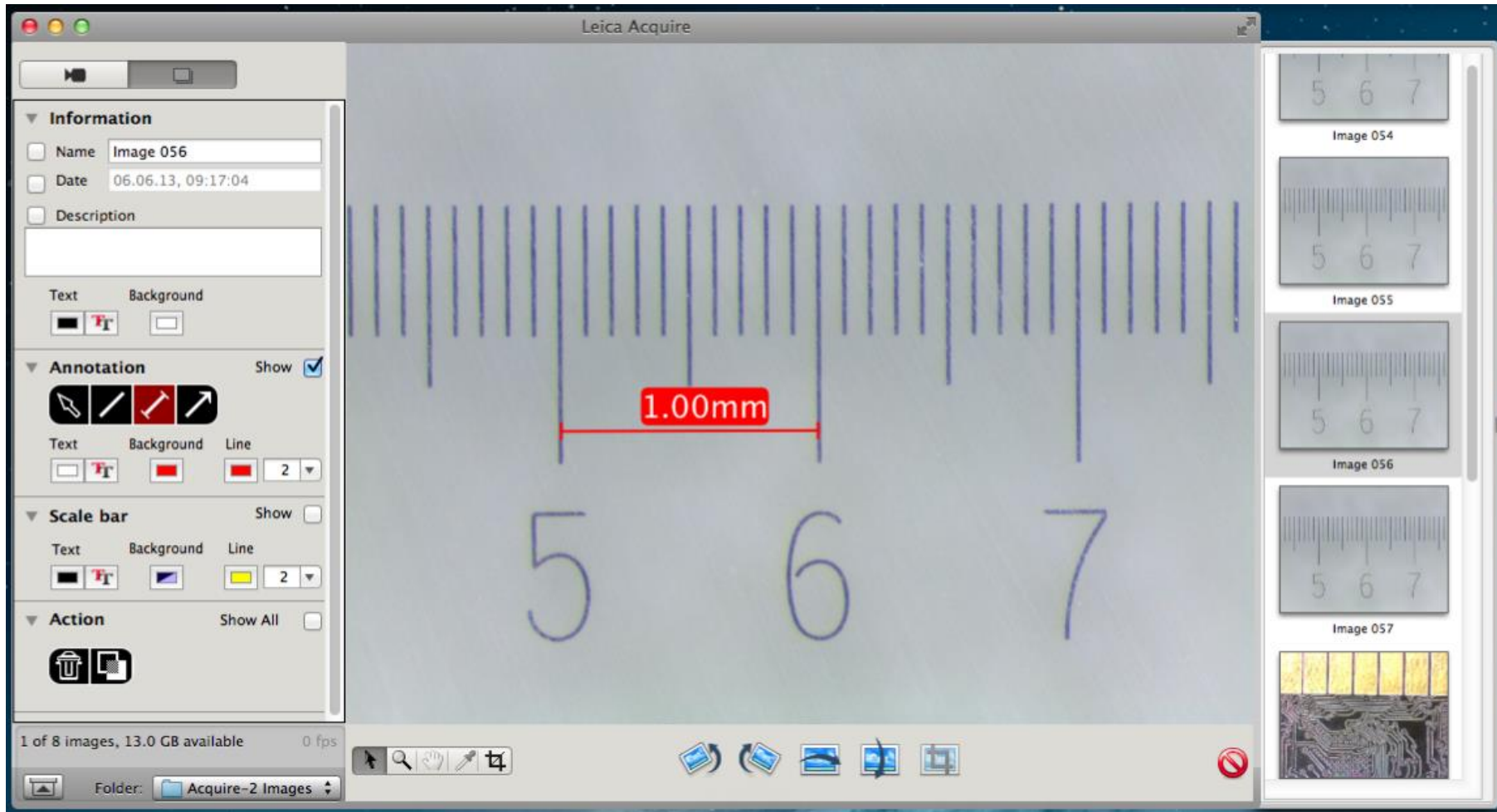


How to use annotation & measurement:



If you measure a distance line that shows a pixel (px) value, then this image (image 055) was captured without a calibration setting. Retake the image again with a calibration. 7

How to use annotation & measurement:



Images with calibration show distance lines in mm or inch (image 056). Add as many distance lines as you want and merge them into the image to permanently save them. 8

Living up to Life